

 **DURA**



DURABLE, ACOUSTICAL, AND COMFORTABLE UNDERLAYMENT

NO.2023-01

SUPER DURA

WE'VE BEEN REVOLUTIONIZING FLOOR ACOUSTICS SINCE 1957

SUPER DURA

RESIDENTIAL USE

Dura has a clear goal: produce the highest performing underlay and carpet cushion products while contributing to the preservation of our environment for generations to come. Through our unique process of giving a second life to used rubber, we've achieved our lofty goal by creating products that absorb sound like no other and lasts for years.

Our Super Dura underlayment epitomizes luxury and comfort, as it is specifically designed for low-traffic and sophisticated areas in hotel suites, penthouses, and home theaters. It is built to last, extending the life of your carpet for many years to come. Super Dura features a thick and soft design that provides a comfortable underfoot experience. Its thickness delivers exceptional acoustical benefits by reducing noise transfer, creating a peaceful environment for guests and residents. Super Dura is used in luxurious hotels, condos, and private homes, where comfort and durability are essential.

HIGH-PERFORMANCE UNDERLAYMENT



ENGINEERED
HARDWOOD
AND LAMINATE



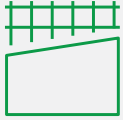
CERAMIC



VINYL



CARPET



✓ **BEST FOR LUXURIOUS SPACES
WITH LIGHT FOOT TRAFFIC**

✓ **MAXIMUM COMFORT AND LUXURY**

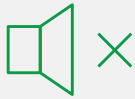
✓ **LASTS A LIFETIME**

✓ **MADE FROM RECYCLED RUBBER**

✓ **RETAINS ITS SOUNDPROOFING
QUALITIES**

WHAT MAKES SUPER DURA THE NEW STANDARD

**GREATLY REDUCES
IMPACT SOUND**



**PROVIDES UNDERFOOT
COMFORT & DOES NOT
COLLAPSE OVER TIME**



**DESIGNED FOR LUXURIOUS
SPACES WITH LIGHT
FOOT TRAFFIC**



**GUARANTEED TO WORK OVER
RADIANT HEATED FLOORS**



**RESISTS MOLD, MILDEW,
AND FUNGUS GROWTH**



EASY TO INSTALL



**CONTRIBUTES TO
LEED CREDITS**



**GREEN LABEL
PLUS+ CERTIFIED**



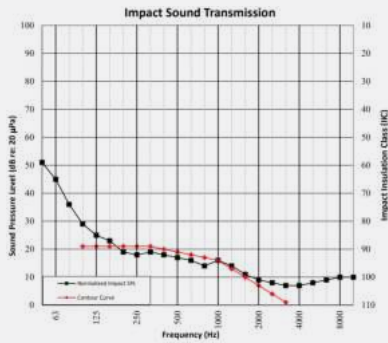
**MADE FROM
RECYCLED RUBBER**



ACOUSTICAL TESTING

PERFORMED BY:
INTERTEK

ASTM E90 + ASTM E492



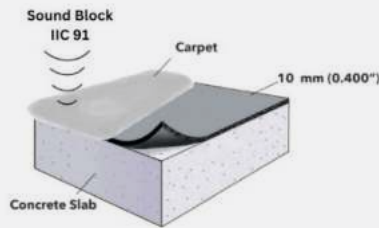
Carpet	IIC*92
Super Dura 10 mm (25/64")	
Cement board (2 x 1/2")	
Duracoustic 8 mm (5/16")	

Carpet	IIC*91
Super Dura 10 mm (25/64")	

6" Concrete Slab	IIC*40
Wire Hung Ceiling Grid	

Approved and tested by experts

Super Dura 10 mm (25/64") was tested under a 12 mm carpet and over a 152 mm concrete slab, obtaining an IIC 91. IIC is a measure of impact sound transmission from one floor to another. The higher the IIC rating, the better quality of sound absorption.



Super Dura Specifications

The sound rated floor material shall be an open cellular rubber shall be an open cellular rubber reinforced with solid rubber particles bonded to fiberglass backing, 10 mm (25/64") thick, approximately 106 oz/yd² in weight and 22 lb/ft³ in density. The product shall have an IIC rating of 91 (tested as per ASTM E90 + ASTM E492) based on the construction detailed in this brochure. The acoustical material shall be Super Dura 10 mm (25/64") manufactured by: Dura Undercushions Ltd.

We invite you to contact us for any inquiries via email: info@duraundercushions.com or via phone: **1-800-295-4126**

IMPERIAL MATERIAL SPECIFICATIONS

Thickness	0.39 in
“R” Value	0.88
Mass	106 oz / sq.yd
Density	22 lb / cu. ft
Tensile	22.8 lb / in
Content	Minimum 90% + recycled rubber bonded with synthetic rubber
Roll Size	15 sq. yd
Roll Weight	66 lb
Roll Width	54 in.
Roll Length	20 ft.
Roll Diameter	11 in.
Coverage	90 sq. ft
Acoustic Value	IIC 91 / ASTM E90 and ASTM E492 - Impact Sound Transmission (With a carpet)
Green Quality	CRI Green Label Plus approved
Anti-Microbial	Naturally resists mold, mildew and fungus growth
Radiant Heated Floors	Suitable for radiant heated floor
LEED	Contributes up to 6 credits
Flammability	PASS Pill Test / ASTM D2859 / Class 1 / ASTM E 648 - Radiant Panel Test / As an assembly with a Class 1 commercial carpet
Warranty	Lifetime*

METRIC MATERIAL SPECIFICATIONS

Thickness	9.91 mm
"R" Value	0.88
Mass	3.59 kg/ sq. m
Density	352.41 kg/ cu. m
Tensile	200 N/ 5 cm
Content	Minimum 90% + recycled rubber bonded with synthetic rubber
Roll Size	8.36 sq. m
Roll Weight	29.94 kg
Roll Width	1.37 m
Roll Length	6.1 m
Roll Diameter	27.94 cm
Coverage	8.36 sq. m
Acoustic Value	IIC 91 / ASTM E90 and ASTM E492 - Impact Sound Transmission (With a carpet)
Green Quality	CRI Green Label Plus approved
Anti-Microbial	Naturally resists mold, mildew and fungus growth
Radiant Heated Floors	Suitable for radiant heated floor
LEED	Contributes up to 6 credits
Flammability	PASS Pill Test / ASTM D2859 / Class 1 / ASTM E 648 - Radiant Panel Test / As an assembly with a Class 1 commercial carpet
Warranty	Lifetime*

QUICK AND EASY TO INSTALL

DOUBLE GLUE-INSTALLATION PROCEDURE

- 1**
SUPER DURA should be laid black side down.
- 2**
Align SUPER DURA seams perpendicular to carpet seams. If not possible, keep a minimum distance of 6" from carpet seams. Consider dry laying the carpet at this stage.
- 3**
Apply quality multi-purpose adhesive with the correct trowel*, spread evenly over the floor surface according to adhesive manufacturer's instructions.
- 4**
After indicated adhesive open time, place SUPER DURA's black side onto the adhesive, align seams tightly and apply light pressure on the cushion with a roller to ensure contact with adhesive.
- 5**
Trim excess SUPER DURA at perimeter of the room.
- 6**
Spread premium multi-purpose adhesive on SUPER DURA surface with a trowel*, following adhesive manufacturer's directions. After indicated adhesive set time, position carpet on adhesive-covered SUPER DURA.
- 7**
Follow manufacturer's instructions when preparing and installing carpet, with special attention to seams and rolling the final installation.
- 8**
Let adhesive set before exposing installation to foot traffic.

Caution:

Using poor quality adhesive, incorrect type, or improper application method can cause installation issues. Please contact Dura Undercushions for the installation of SUPER DURA underneath an area rug or stair runner.

* When following the double glue-installation procedure, consider using a 1/8" x 1/8" x 1/8" U-notch trowel for even adhesive coverage.



TACKLESS AND STRETCH-IN INSTALLATION PROCEDURE

- 1**
Measure the length and width of the room and cut SUPER DURA to size, leaving a 1/2" gap around the perimeter of the room.
- 2**
SUPER DURA should be laid black side down. Ensure that it covers the entire area of the room.
- 3**
Use double-sided carpet tape to secure the edges of SUPER DURA to the floor along the perimeter of the room, leaving a 1/2" gap around the edges.
- 4**
Install tack strips around the perimeter of the room, making sure to leave a 1/4" gap between the strip and the wall.
- 5**
Stretch the carpet over SUPER DURA and tuck the carpet into the gap between the tack strip and the wall using a knee kicker or power stretcher.
- 6**
Use a carpet knife to trim any excess carpet along the edges of the room.

WARRANTY

Dura underlayments are warranted to retain their essential firmness, resilience, and porosity through the useful life of the floor covering under which they are installed. This warranty applies to all types of indoor installations. In the event of a confirmed product failure due to defective manufacture the company will replace, without charge, the defective portion of the underlayment with new equivalent product.

This warranty is valid only when the product is used in accordance with our instructions and for its intended purpose and does not cover defects or failures due to inappropriate use or abuse.



DISCOVER MORE

DURABLE ACOUSTICAL COMFORT



For Engineered Hardwood and Laminated Flooring

YOU NEED:
DURA-SON
DURA-SON MB

MULTI-RESILIENT LAYER FLOORING

YOU NEED:
DURACOUSTIC



For Carpets

YOU NEED:
DURACUSHION
SUPERDURA
PROTECTOR
DURALUX

MULTI-RESILIENT LAYER FLOORING

YOU NEED:
DURACOUSTIC

The durability of our products are the solution to all your acoustical needs. They will outlast and maintain their acoustical and comfort qualities throughout their lifetime.

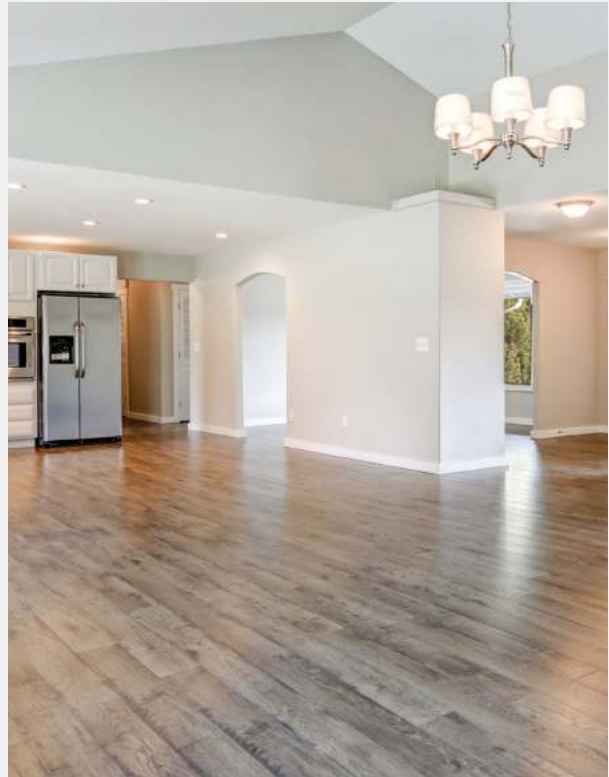


For Ceramics

YOU NEED:
DURAQUIET

MULTI-RESILIENT LAYER FLOORING

YOU NEED:
DURACOUSTIC



For Vinyl

YOU NEED:
DURAQUIET

MULTI-RESILIENT LAYER FLOORING

YOU NEED:
DURACOUSTIC



**8525 CHEMIN DELMEADE, MONTREAL
QC H4T 1M1**

1-800-295-4126

INFO@DURAUNDERCUSHIONS.COM

WWW.DURACUSHION.COM

