

 **DURA**



---

**DURABLE, ACOUSTICAL, AND COMFORTABLE UNDERLAYMENT**

**NO.2023-01**

---

**DURA-SON**

---

# WE'VE BEEN REVOLUTIONIZING FLOOR ACOUSTICS SINCE 1957

---

## DURA-SON

---

### RESIDENTIAL & COMMERCIAL USE

Dura has a clear goal: produce the highest performing underlay and carpet cushion products while contributing to the preservation of our environment for generations to come. Through our unique process of giving a second life to used rubber, we've achieved our lofty goal by creating products that absorb sound like no other and lasts for years.

With our Dura-Son underlayment, we provide the comfort and luxury that only a soundproof space can offer. Ideal for engineered hardwood and laminate flooring systems, Dura-Son is perfectly adapted to the standards of the residential and commercial sector and is guaranteed for life.

# HIGH-PERFORMANCE UNDERLAYMENT



ENGINEERED  
HARDWOOD  
AND LAMINATE



CERAMIC



VINYL



CARPET



✓ **THE BEST ACOUSTICAL UNDERLAYMENT IN ITS CATEGORY**

✓ **MADE FROM RECYCLED RUBBER**

✓ **LASTS A LIFETIME**

✓ **RETAINS ITS SOUNDPROOFING QUALITIES**

---

# WHAT MAKES DURA-SON THE NEW STANDARD

---

**GREATLY REDUCES  
IMPACT SOUND**



---

**PROVIDES UNDERFOOT  
COMFORT & DOES NOT  
COLLAPSE OVER TIME**



---

**GUARANTEED TO WORK OVER  
RADIANT HEATED FLOORS**



---

**RESISTS MOLD, MILDEW,  
AND FUNGUS GROWTH**



---

**EASY TO INSTALL**



---

**CONTRIBUTES TO  
LEED CREDITS**



---

**GREEN LABEL  
PLUS+ CERTIFIED**



---

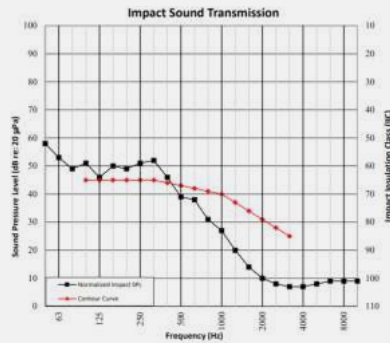
**MADE FROM  
RECYCLED RUBBER**



# ACOUSTICAL TESTING

**PERFORMED BY:**  
**INTERTEK**

## ASTM E90 + ASTM E492

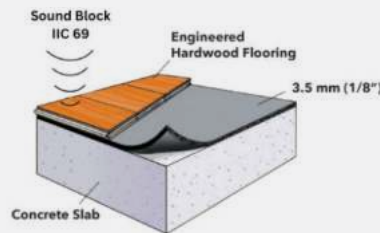


14 mm Engineered Hardwood      IIC\*69  
Dura-Son 3.5 mm (1/8")

Reinforced Concrete Slab      IIC\*36  
200 mm (8") Bare Slab

## Approved and tested by experts

Dura-Son 3.5 mm was tested in a bedroom under a 14 mm engineered hardwood floor over an 8" concrete slab. Dura-Son 3.5 mm (1/8") obtained an IIC 69. IIC is a measure of impact sound transmission from one floor to another. The standard IIC recommendation is 55 with a hardwood flooring. The higher the IIC rating, the better quality of sound absorption.



## Dura-Son Specifications

The sound rated floor material shall be an open cellular rubber shall be an open cellular rubber reinforced with solid rubber particles bonded to fiberglass backing, 3.5 mm (1/8") thick, approximately 40 oz/yd<sup>2</sup> in weight, and 22 lb/ft<sup>3</sup> in density. The product shall have an IIC rating of 69 (tested as per ASTM E90 + ASTM E492) based on the construction detailed in this brochure. The acoustical material shall be DURA-SON 3.5 mm (1/8") manufactured by: Dura Undercushions Ltd.

We invite you to contact us for any inquiries via email: [info@duraundercushions.com](mailto:info@duraundercushions.com) or via phone: **1-800-295-4126**

---

# IMPERIAL MATERIAL SPECIFICATIONS

---

<b>Thickness</b>	0.137 in
<b>“R” Value</b>	0.32
<b>Mass</b>	40 oz / sq. yd
<b>Density</b>	22 lb / cu. ft
<b>Tensile</b>	24 lb / in
<b>Content</b>	Minimum 90% + recycled rubber bonded with synthetic rubber
<b>Roll Size</b>	24 sq. yd
<b>Roll Weight</b>	60 lb
<b>Roll Width</b>	54 in.
<b>Roll Length</b>	48 ft.
<b>Roll Diameter</b>	10 in.
<b>Coverage</b>	216 sq. ft
<b>Acoustic Value</b>	IIC 69 / ASTM E90 and E492 - Impact Sound Transmission
<b>Green Quality</b>	CRI Green Label Plus approved
<b>Anti-Microbial</b>	Naturally resists mold, mildew and fungus growth
<b>Radiant Heated Floors</b>	Suitable for radiant heated floor
<b>LEED</b>	Contributes up to 6 credits
<b>Flammability</b>	PASS Pill Test / ASTM D2859
<b>Warranty</b>	Lifetime*

---

---

# METRIC MATERIAL SPECIFICATIONS

---

<b>Thickness</b>	3.48 mm
<b>"R" Value</b>	0.32
<b>Mass</b>	1.36 kg / sq. m
<b>Density</b>	352.41 kg / cu. m
<b>Tensile</b>	214 N / 5 cm
<b>Content</b>	Minimum 90% + recycled rubber bonded with synthetic rubber
<b>Roll Size</b>	20.1 sq. m
<b>Roll Weight</b>	27.22 kg
<b>Roll Width</b>	1.37 m
<b>Roll Length</b>	14.63 m
<b>Roll Diameter</b>	25.4 cm
<b>Coverage</b>	20.01 sq. m
<b>Acoustic Value</b>	IIC 69 / ASTM E90 and E492 - Impact Sound Transmission
<b>Green Quality</b>	CRI Green Label Plus approved
<b>Anti-Microbial</b>	Naturally resists mold, mildew and fungus growth
<b>Radiant Heated Floors</b>	Suitable for radiant heated floor
<b>LEED</b>	Contributes up to 6 credits
<b>Flammability</b>	PASS Pill Test / ASTM D2859
<b>Warranty</b>	Lifetime*

---

# QUICK AND EASY TO INSTALL

## STEPS

1

Make sure the subfloor is clean and dry. When installing over bare concrete floor, install a vapor barrier first.

2

When installing floating floors, laminate or engineered hardwood, DURA-SON is loose laid and not glued to the subfloor. Always install black side down.

3

When installing glued engineered hardwood and laminate floors, DURA-SON is glued down to the subfloor and under the top floor.\* Always install black side down.

4

DURA-SON may be installed parallel or perpendicular to laminate flooring.

5

DURA-SON seams must be placed tightly together and preferably taped with duct tape.

6

Always follow the flooring manufacturer's specifications.



### Dura-Son is not suitable for:

- Parquet wood tile floor
- Solid hardwood floor
- Ceramic, vinyl tile or vinyl sheet

Contact us directly if you plan an installation under ceramic, parquet wood tile floor, vinyl tile or vinyl sheet.

\*Please contact Dura Undercushions for glue recommendations when installing DURA-SON.



---

# WARRANTY

Dura underlayments are warranted to retain their essential firmness, resilience, and porosity through the useful life of the floor covering under which they are installed. This warranty applies to all types of indoor installations. In the event of a confirmed product failure due to a manufacturing defect, we will replace the defective section of the underlayment with a new equivalent product, free of charge.

This warranty applies only if the product is used in accordance with our instructions and for its intended purpose. It does not cover defects or failures due to improper use or misuse.



# DISCOVER MORE

## DURABLE ACOUSTICAL COMFORT



### For Engineered Hardwood and Laminated Flooring

**YOU NEED:**  
DURA-SON  
DURA-SON MB

### MULTI-RESILIENT LAYER FLOORING

**YOU NEED:**  
DURACOUSTIC



### For Carpets

**YOU NEED:**  
DURACUSHION  
SUPERDURA  
PROTECTOR  
DURALUX

### MULTI-RESILIENT LAYER FLOORING

**YOU NEED:**  
DURACOUSTIC

The durability of our products are the solution to all your acoustical needs. They will outlast and maintain their acoustical and comfort qualities throughout their lifetime.



---

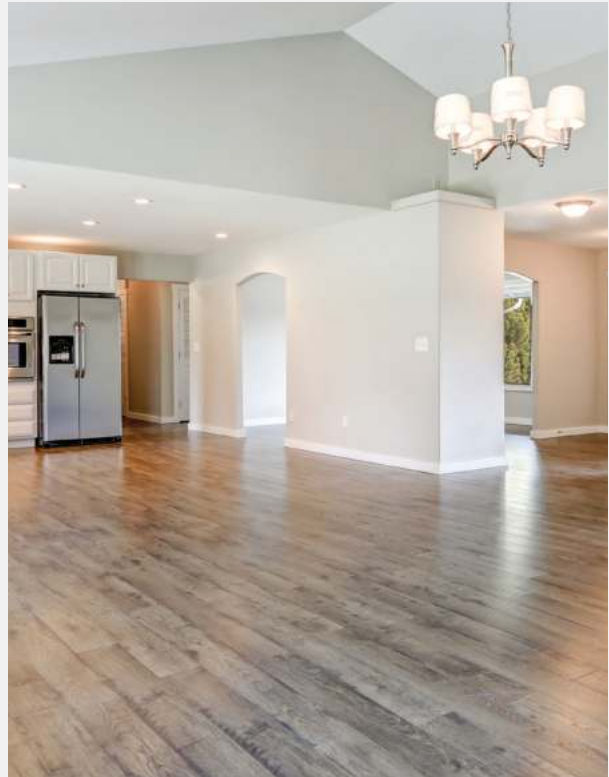
## For Ceramics

**YOU NEED:**  
DURAQUIET

---

## MULTI-RESILIENT LAYER FLOORING

**YOU NEED:**  
DURACOUSTIC



---

## For Vinyl

**YOU NEED:**  
DURAQUIET

---

## MULTI-RESILIENT LAYER FLOORING

**YOU NEED:**  
DURACOUSTIC



---

**8525 CHEMIN DELMEADE, MONTREAL  
QC H4T 1M1**

---

**1-800-295-4126**

---

**INFO@DURAUNDERCUSHIONS.COM**

---

**[WWW.DURACUSHION.COM](http://WWW.DURACUSHION.COM)**

