



annieglass

SUSTAINABLY HANDCRAFTED IN THE USA

CELEBRATING **40** YEARS



HANDCRAFTED
IN THE **USA**

2023

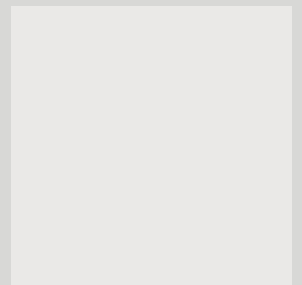
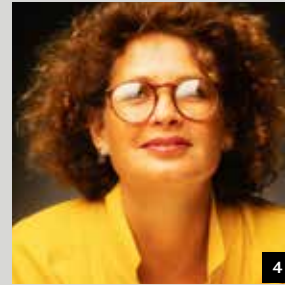
CELEBRATING 40 YEARS



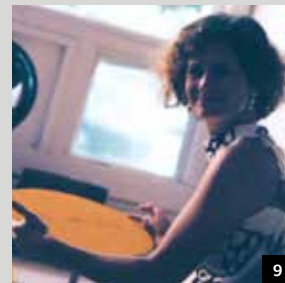
EXCELLENCE



SUSTAINABILITY



INNOVATION



RESILIENCE



AMERICAN CRAFT



ANNIEGLASS 2023

40 YEARS OF ICONIC AMERICAN CRAFT

Since 1983, Annie Morhauser and her team of master glassmakers have been handcrafting exquisite glass tableware, home décor, and sculpture with passion and precision. Made entirely by hand in the USA, accented with genuine precious metals, hand-signed, dishwasher-safe, and durable enough to last a lifetime, Annieglass pieces are cherished heirlooms and functional art that infuse everyday life with beauty and joy.

Fresh out of art school with a degree in glassmaking, a passion for craft, and little else, Annie Morhauser rented a small studio to share with a painter and began the long journey of building an American Craft legacy. In 1983, Annieglass was born: a humble company with just two employees. Now Annieglass is sold among high-end retailers and online stores throughout North America, and proudly used in the finest restaurants across the country as a frame for the culinary creations of Michelin-starred chefs.

2023 marks Annieglass's 40th anniversary as a trailblazer of attainable, handmade luxury glassware. Transforming from a hippie art student in the 1970s to an icon of American Craft, Annie Morhauser has carved a courageous path as a woman artisan and business owner in a male-dominated industry and era.

Explore the breadth of our exquisite collections at annieglass.com.

- 1 Annie learning how to blow glass, 1977
- 2 Early Annieglass staff late 80's
- 3 California Glass Symposium, 1979
- 4 Annie, 1988
- 5 Marvin Lipofsky, Annie's mentor at CCAC 1977
- 6 Michael Reinhold, former co-owner of Annieglass
- 7 Young Taylor Reinhold, Loma Prieta earthquake, 1989
- 8 Annie and Michael 1976 Santa Cruz, CA
- 9 Annie working in her studio, 1986
- 10 Staff on double shift days late 90's
- 11 Michael with Dawn Spurlock, first production staffer
- 12 Line for Mother's Day Sale '80's
- 13 New York Gift Show, 1990
- 14 Opening of Santa Cruz store, 1992
- 15 Annie in original studio early '80's
- 16 Sherlyn Torres, customer service 1993
- 17 Taylor Reinhold with his dog Lucky on a martini tray 2000
- 18 Mother's Day postcard with Taylor Reinhold 1990
- 19 Mother's Day postcard with Ava Reinhold 1995
- 20 Ava bringing samples to Bloomingdale's 1998
- 21 Annie with her first lighting design 1981



COMMUNITY

A PASSION FOR GLASS

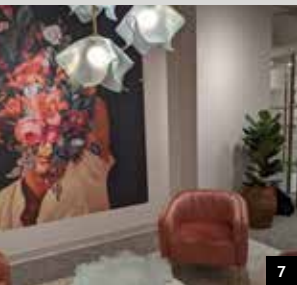


A LEADER IN CREATIVE INNOVATION & TECHNOLOGY

Sustainably handcrafted on California's Central Coast, Annieglass embodies the beauty of individuality. The devotion to craftsmanship shines through in each Annieglass piece: glass retains natural texture from its handmade ceramic molds, hand-painted and kiln-fired bands of gold and platinum show the artists' brush strokes, and each piece is hand-engraved with the studio's signature. The "wabi-sabi," asymmetrical "marks of the maker" are embraced and highlighted.

Annie's unparalleled glassmaking technique and commitment to craft have earned her a permanent place in the Smithsonian Museum of American Art. In 2022, she was named Santa Cruz County's Artist of the Year and her story was told in the documentary *Resilience* by Swan Dive Media.

Today, the creativity and craftsmanship that established Annieglass as an admired industry leader continues to unfold as Annie creates breathtakingly unique styles and implements new waste-reducing, sustainable production practices.





FAMILY & COMMUNITY

Annie is now joined by her son, muralist Taylor Reinhold, and her daughter, Ava Reinhold (Annieglass's retail manager), offering freshness for new generations and long-time Annieglass collectors alike. Highly anticipated biannual collection releases constantly infuse the Annieglass repertoire with exciting new designs and refresh the beloved classics.

Ava has expanded Annieglass into a coveted lifestyle brand, sharing the art of entertaining with fresh local food, fine wine, craft beer, and good friends. In this spirit, Ava transformed the Annieglass studio into a convivial combination of factory-artbar-shop, where visitors can browse our curated shop, take a craft workshop, and see the glass making process.

Annie continues to focus her time on technology, merging her lifetime of experience in the ancient art of glassmaking with innovative art and design — always inspired by nature, her community, and her experiences around the world.



TABLE OF CONTENTS

- 56 ANEMONE
- 8 BUTTERFLY
- 4 CHEETAH
- 10 DAISY CHAIN
- 12 EDGEY
- 16 ELEMENTS
- 20 GROVE
- 22 HEARTS
- 24 JAXSON
- 45 JUDAICA
- 28 LEAVES
- 28 LOTUS
- 30 MOD
- 34 POPPY
- 36 ROCOCO
- 39 ROMAN ANTIQUE
- 46 RUFFLE
- 52 SALT
- 56 SCULPTURE
- 63 SHELLS-FROSTED
- 66 SHELLS-ULTRAMARINE
- 70 SPLATTER
- 38 TRACERY
- 72 VOTIVES
- 6 ZEBRA

- 1 Artist of the Year, Santa Cruz County 2022
- 2 Master painter Ignacio applying gold lustre freehand
- 3 Annie in the studio
- 4 Master painter Guida using turntable to apply gold lustre
- 5 A stack of platinum edged Edgey dinnerware
- 6 Annie about to carve clay for Butterfly chip & dip mold
- 7 Atlanta showroom, 2022
- 8 Scrap glass kept for remelting into Elements trays & trivets
- 9 Some of the 30 electric kilns Annieglass factory, Watsonville, CA
- 10 Taylor Reinhold, professional artist, muralist, graphic designer and Annie's son
- 11 Ava Reinhold, Annieglass retail manager and heir apparent
- 12 Ava and Annie showing family Santana Row store opening, San Jose, Ca 2014
- 13 Annie with Girls Inc, one of over 365 recipients of Annieglass donations and scholarships
- 14 Annieglass factory, Watsonville, CA 2022

ANIMAL PRINTS / CHEETAH



Live on the wildside with this stylish collaboration between Annie and her daughter, Ava Reinhold, Annieglass's Retail Manager and our resident joy-creator. Cheetah is one of our most popular collections ever!

Any animal print is a timeless classic, and Cheetah is no exception. Heavily patterned with fierce spots, this sought-after design makes a cherished gift for the playful and powerful taste-markers in your life.

The Cheetah Heart Bowl makes for a perfect makeup or jewelry plate. We recommend hand-washing Cheetah for a longer lifespan.

MIX & MATCH WITH: Ruffle, Mod, or any of our solid and gold-bordered collections



C101G
7" square plate
\$109 MSRP 202352



C102G
8 ¾" salad plate
\$109 MSRP 202352



C106G
10 ½" round dinner plate
\$113 MSRP 202354



CSH502G
7" heart plate
\$105 MSRP 202350



CSH503G
5" heart bowl
\$67 MSRP 202332

MIX IT UP
G144 Ruffle Charger & C106G Cheetah 10 ½" round plate



ANIMAL PRINTS / ZEBRA



CSH602P
7" heart plate
\$105 MSRP 202350



CSH603P
5" heart bowl
\$67 MSRP 202332

Stand out with stripes. This dramatic design comes from Annie's artist son, Taylor Reinhold, inspired by his travel sketches of African wildlife.

Eye-catching platinum stripes demand attention — making for stunning serving pieces, tablescape highlights, or stand-alone art for the table.

STYLE TIP: The Zebra Heart Bowl is an elegant holder for lipstick, jewelry, or keys.

MIX & MATCH WITH: Edgey, Roman Antique, Ruffle, or Rococo.



ZB109G
12" round plate
\$151 MSRP 202372



ZB168G
11 x 7" rectangular tray
\$122 MSRP 202358



ZB203G
12" square platter
\$189 MSRP 202390

BUTTERFLY



Another bouquet of flowers? Send butterflies instead. The butterfly's symbolism of renewal and transformation shines through in these sparkling pieces. Fluttering with a chic yet understated butterfly pattern, our Butterfly Collection is inspired by the annual Monarch butterfly migration through the Monterey Bay region of California.

An eternal favorite for gift-giving, beloved by sweethearts, moms, grandmothers, graduates, and hostesses alike.

STYLE TIP: The beautiful square tray is a stylish display for sweets or perfumes.



B102G
7" heart plate
\$88 MSRP 202342



B107G
10" square plate
\$101 MSRP 202348

B177G
11 x 11" Four-point bowl
\$158 MSRP 202375



B200G
18 x 14" chip & dip server
\$193 MSRP 202392



B201G
12 x 10" tray
\$113 MSRP 202354

DAISY CHAIN



Interlocking floral patterns in a line drawing-style makes the Daisy Chain Collection one of our most playful and light-hearted designs. Created with 24 karat gold, these smooth glass plates are perfect for serving candy or sweets, or displaying jewelry and makeup.

GIFTING TIP: The new Daisy Chain Heart is an instant success for Mother's Day, graduations, girlfriend gifts, and more.



DC100G
7" heart plate gold
\$90 MSRP 202343



MIX IT UP:
Edgey 12" Charger E108G with
Daisy Chain 10 1/2" dinner plate DC106G



DC102G
8 3/4" salad plate
\$95 MSRP 202345



DC106G
10 1/2" dinner plate
\$103 MSRP 202349

EDGEY



The marks of the maker shine through in this defining Annieglass collection. Daring and sophisticated, Edgy is an entertaining favorite that adds a celebratory air to any occasion.

Each piece of thick-cut glass with multi-faceted gold or genuine platinum edges is completely unique.

Meticulously hand-chipped by our master artisans, these glittering pieces illustrate the Annieglass commitment to unparalleled craftsmanship.

STYLE TIP: Edgy comes in a full collection of dinnerware, serveware, and partyware — a timeless wedding favorite



E099 G/P
7" hors d'oeuvre plate
\$109 MSRP 202352



E102 G/P
8 1/2" salad plate
\$113 MSRP 202354



E105 G/P
9" soup bowl
\$103 MSRP 202349



E106 G/P
10" dinner plate
\$113 MSRP 202354



E108 G/P
12" charger
\$147 MSRP 202370



E117 G/P
17 1/4 x 11 1/2" martini tray
\$317 MSRP 2023151



E118 G/P
17 1/2 x 8" rectangular tray
\$284 MSRP 2023135



E127 G/P
15 3/4 x 9" large cheese slab
\$237 MSRP 2023113



E128 G/P
13" pedestal stand
\$469 MSRP 2023223



E151 G/P
6 ¼ x 16 ½" oblong tray
\$204 MSRP 202397



E165 G/P
13 ½" round bowl
\$330 MSRP 2023157



E177 G/P
11 x 11" four-point bowl
\$307 MSRP 2023146



E182 G/P
11 ½" trophy bowl
\$418 MSRP 2023199



E205 G/P
14 x 14" square cake stand
\$510 MSRP 2023243



E203 G/P
12" square platter
\$216 MSRP 2023103



E214 G/P
13 1/2 x 6" appetizer tray
\$221 MSRP 2023105



E215 G/P
14 x 7" Leaf bowl
\$189 MSRP 202390



ELEMENTS



Created with repurposed scrap glass from our studio to reduce our environmental impact, Elements is one of Annie's most innovative designs (and is currently patent pending patent).

By incorporating "rescued" materials, the Elements Collection achieves a sustainable, stylish aesthetic, completely unique in the glassmaking world.

Annie's passion for sustainability and innovation shines through in these versatile, 100% reclaimed creations.

STYLE & GIFTING TIP: Elements are beautiful as trivets, candle holders, or soap plates for the eco-minded loved ones on your gift lists



CR105
6 ¼ x 3 ¼" small cross
\$80 MSRP 202338



CR110
7 ¼ x 4" large cross
\$86 MSRP 202341



E103
16 x 8" Holiday tree
\$105 MSRP 202350



EL101
7 ½ x 7 ½" Earth trivet
\$74 MSRP 202335



EL102
9 ½ x 6 ½" Cloud trivet
\$74 MSRP 202335



EL106
8 x 12" Kisser fish
\$105 MSRP 202350

RECYCLING GLASS

DETERMINED TO MAINTAIN ZERO WASTE GOALS, ANNIE LOCKED HERSELF IN A ROOM UNTIL SHE FIGURED OUT HOW TO REUSE SCRAP GLASS.

A DESIGN PATENT IS PENDING FOR HER SOLUTION CALLED THE ELEMENTS COLLECTION.



For decades all our scrap glass was returned to the factory 60 miles away that made the flat glass that we transform into Annieglass.



Once that factory was shut down Annie had to create a new method to use the scrap glass as well as a new collection to continue a zero waste policy of manufacturing Annieglass.



The scraps are heated into a solid block then cut on the water jet.



The Elements collection of trays and trivets made from upcycled scrap glass.

SUSTAINABILITY

Since her participation in 1970's first-ever Earth Day as a teenager, Annie has been a passionate advocate for environmental sustainability. Eco-sourcing, recycling, reusing, and zero-waste goals have been standards since Annieglass' founding. With a patent pending, the stand-out Elements Collection uses an innovative technique to reclaim factory scraps to create new pieces.

A novel compilation of thoughtful sustainability measures are taken throughout the process at Annieglass. Abundant skylights, low-wattage energy-efficient lighting, and a reflective insulated roof keep the studio's energy use low. Water used in the process is recirculated, and glass is cleaned with non-toxic vinegar. Creative kiln-firing times ensure energy efficiency during the trademark "slumping" of glass. Biodegradable, plant-based packaging material delivers the final touch of earth-friendly luxury products to customers.



EL113
13 ½ x 8" Dolphin trivet
\$105 MSRP 202350



EL114
14 ½ x 5 ½" Seahorse trivet
\$105 MSRP 202350



EL200
14 ½ x 8 ½" Lake appetizer tray
\$105 MSRP 202350



EL202
14 ½ x 8 ½" River appetizer tray
\$105 MSRP 202350

GROVE



The inspiration for our Grove Plank Cheese Board is unmistakable: its grain, knots, and texture mirror the Giant Redwoods of Northern California, Annie's home. Nature-lovers and party hosts alike adore Grove for its subtle green hues and versatile design, for small gatherings or family feasts. Absolutely perfect as a charcuterie board or fresh fruit display.

STYLE TIP: For everyday beauty, add Grove to your daily dining table to hold fruit, appetizers, sushi, salt and pepper, honey and jam jars, or garnishes



GE199
20 x 10 ½" XL plank server
\$147 MSRP 202370



GE200
15 x 8" large plank cheeseboard
\$122 MSRP 202358



GE201
12 x 5 ½" small plank cheeseboard
\$103 MSRP 202349

HEARTS



Splendidly sweet, these classic heart-shaped plates and bowls come in many of our beloved classic and modern styles: Jaxson, Mod, Cheetah, Ruffle, Zebra, and more. Gorgeous as individual accents or as a collection, and ideal for personalized engraving to make your heartfelt wishes even more special.

A “heart of glass” is a cherished gift for bridal parties, Valentine’s Day, Mother’s Day, anniversaries, and thank you gifts for your darlings of all ages.

STYLE TIP: Perfect as a decadent dessert or hors d’oeuvres plates, jewelry holders or home décor accents.

B102G

7" Butterfly heart plate
\$88 MSRP 202342



DC100G

7" Daisy Chain heart plate
\$90 MSRP 202343



CSH101 G/P

8" Roman Antique heart bowl
\$80 MSRP 202338



CSH102 G/P

7" Roman Antique heart plate
\$67 MSRP 202332



CSH103 G/P
5" Roman Antique heart bowl
\$57 MSRP 202327



CSH105G
8" Sweetheart bowl
\$84 MSRP 202340



CSH502G
7" Cheetah heart plate
\$105 MSRP 202350



CSH503G
5" Cheetah heart bowl
\$67 MSRP 202332



CSH602P
7" Zebra heart plate
\$105 MSRP 202350



CSH603P
5" Zebra heart bowl
\$67 MSRP 202332



G/P 201
8" Ruffle heart bowl
\$86 MSRP 202341



JX100G
7" Jaxson heart plate
\$95 MSRP 202345



MD200 G/P
7" Mod heart plate
\$101 MSRP 202348

JAXSON



Adventurous and artful, Jaxson demands attention. Drips and splatter of 24 karat gold adorn this stunningly unique collaboration between Annie and her son, renowned muralist and street artist Taylor Reinhold.

Set a jaw-dropping table with the complete dining and serving pieces, or use Jaxson trays to accent the everyday tablescape or home bar.

MIX & MATCH WITH: Roman Antique, Edgy, Mod, or Ruffle for endless combinations of creativity.



JX102G
7 1/2" small plate
\$74 MSRP 202335



JX103G
7 1/2" small bowl
\$74 MSRP 202335



JX106G
9 1/2" medium plate
\$95 MSRP 202345



STACK IT UP
Make your own
abstract painting



JX109G
11 3/4" large plate
\$107 MSRP 202351



JX110G
12 1/2" serving bowl
\$113 MSRP 202354



JX130G
14 1/2 x 10" martini tray
\$204 MSRP 202397



JX165G
13 1/2" large serving bowl
\$204 MSRP 202397





JX203G
13" square tray
\$193 MSRP 202392



JX214G
13 1/4 x 5 1/4" appetizer tray
\$101 MSRP 202348

LEAVES & LOTUS



Sink into the refreshing ease of tropical luxury. Our Leaves Collection boasts nature's beauty with green-hued glass, fluted curves, dynamic waves, and attractive texture.

This collection is a show-stopper for summer serving (or an early-Autumn evocation of summer's sweetness). While each piece functions perfectly alone, Leaves are breathtaking when displayed all together.

STYLE HINTS: Without gold or platinum, Leaves are perfect for the "glass purist" and stand out as décor accents around a home of any style.

Luminescent green glass exudes the silky, ever-changing texture of water in the Lotus Collection. An ethereal serving set inspired by natural beauty, Lotus is perfect for warm-weather gifting and entertaining, adding understated drama to a summer table.

SERVING TIP: Lotus platters are a stunning canvas for fresh fruit and veggies right from the farmer's market.

MIX & MATCH WITH: Leaves Collection.



L300GR
15 ½" large Palm Frond bowl
\$113 MSRP 202354



L301GR
7 ¾" small Palm Frond bowl
\$59 MSRP 202328



L303GR
12 ½" x 11 ¼" Palm Frond cheeseboard
\$86 MSRP 202341



L304GR
17" Palm Frond platter
\$124 MSRP 202359



L400GR
29 x 10" large Banana leaf
\$160 MSRP 202376



LT112GR
13" Lotus round bowl
\$95 MSRP 202345



LT113GR
14" Lotus round platter
\$88 MSRP 202342



LT115GR
16 x 7 ½" Lotus oval platter
\$84 MSRP 202340

MOD



The Mod Collection is a stand-out among Annieglass collections, earning Annie her very first design patent. Featuring Dutch-inspired minimalist design, Mod's simplicity and clean-lined look compliments almost any style.

Beautiful in contemporary settings, Mod showcases precise rounded edges with an eye-catching "dipped-in" look of precious metal highlights.

Mod is a youthful and urban design that becomes an entertaining go-to.

STYLE HINT: The Mod Round Serving Tray is a favorite for creating cheese, charcuterie, or newly fashionable butter boards.



MD100 G/P
6 1/2" small round plate
\$65 MSRP 202331



MD102 G/P
9 1/4" medium round plate
\$88 MSRP 202342



MD109 G/P
12 1/2" large round plate
\$111 MSRP 202353



MD113 G/P
16" round platter
\$141 MSRP 202367



MD116 G/P
18 x 11 1/2" large oval platter
\$204 MSRP 202397





MD150 G/P
5 ½ x 11 ½" small oval server
\$111 MSRP 202353



MD151 G/P
6 ¼ x 16 ½" medium oval server
\$160 MSRP 202376



MD228 G/P
15 ¼ x 7 ¼" cheeseboard
\$137 MSRP 202365



MD230 G/P
21 ¼ x 8 ¼" large cheeseboard
\$208 MSRP 202399



MD242 G/P Patented
11 ¼ x 10" medium rounded server
\$137 MSRP 202365



MD244 Patented
15 x 12 ½" large, rounded server
\$193 MSRP 202392



POPPY



F525G
22 x 25 x 9" sculpture
\$617 MSRP 2023270

Annie's unmatched craftsmanship shines through in Poppy, one of her most breath-taking designs yet. Opaque frosted-glass ripples are adorned with intermittent 24 karat gold-painted edges.

Just like its namesake flower's textured petals, Poppy expresses the elaborate elegance of nature.

These striking bowls transform any table in an artful, ethereal gardenscape.

The Giant Poppy is Annie's largest piece ever, limited to 500-piece production, signed by Annie and accompanied with its unique numbered edition certificate.



PP105
9 ½" small bowl
\$113 MSRP 202354



PP110
11 ½" medium bowl
\$147 MSRP 202370



PP115
17" large bowl
\$181 MSRP 202386

ROCOCO



The Rococo Collection fuses craft tradition with creative innovation. Inspired by the whimsical, lively household objects from *Beauty & The Beast* and fantastical fairytale mirrors, Rococo stands out with its playful sophistication. Distinctive asymmetric curves borrow from 18th-century china patterns, while the wide rim of 24 karat gold echoes old-world luxury.

Unique marks on Rococo's beautiful gold trim illustrate the "marks of the maker" that make Annielass so special — and so coveted.

Rococo exemplifies a level of technical expertise and craftsmanship that is exclusive to Annielass, once again solidifying Annie Morhauser's status as a trail-blazing creative force.



RR109G
13" round buffet plate
\$122 MSRP 202358



RR116G
18 x 11" oval platter
\$248 MSRP 2023118



RR205G
15" square platter
\$248 MSRP 2023118



CT102G
8 ½" Christmas tree plate
\$97 MSRP 202346



TC106G
10 ½" Tracery dinner plate
\$105 MSRP 202350



MIX IT UP:
RR 109G Rococo round buffet plate, TC106G Tracery dinner plate, CT102G Christmas tree salad plate

ROMAN ANTIQUE



The signature Annielglass design and Annie's original tour de force, the Roman Antique Collection defines the sophistication and everyday luxury of handmade glassware. Roman Antique broke the mold of glassmaking: introducing dishwasher high-end dinnerware, accentuated with precious metal, that was made to be used and loved.

Standing out with its thick-cut glass, wide collar of precious metal, unique texture, and long-lasting durability, Roman Antique is an heirloom gift that will be cherished for decades. Chefs see this elegant collection as a frame for their creations and marvel at its lifespan, durability, chip-resistance, dishwasher-safety.

STYLE TIP: Ideal for weddings and celebrations, this collection is available in a full range of dining and servingware, including a variety of bowls and trays, cake stands, sectioned appetizer plates, pastry trays, and more.

ROMAN ANTIQUE



G/P 099
6" hors d'oeuvre plate
\$59 MSRP 202328



G/P 102
8 3/4" salad plate
\$74 MSRP 202335



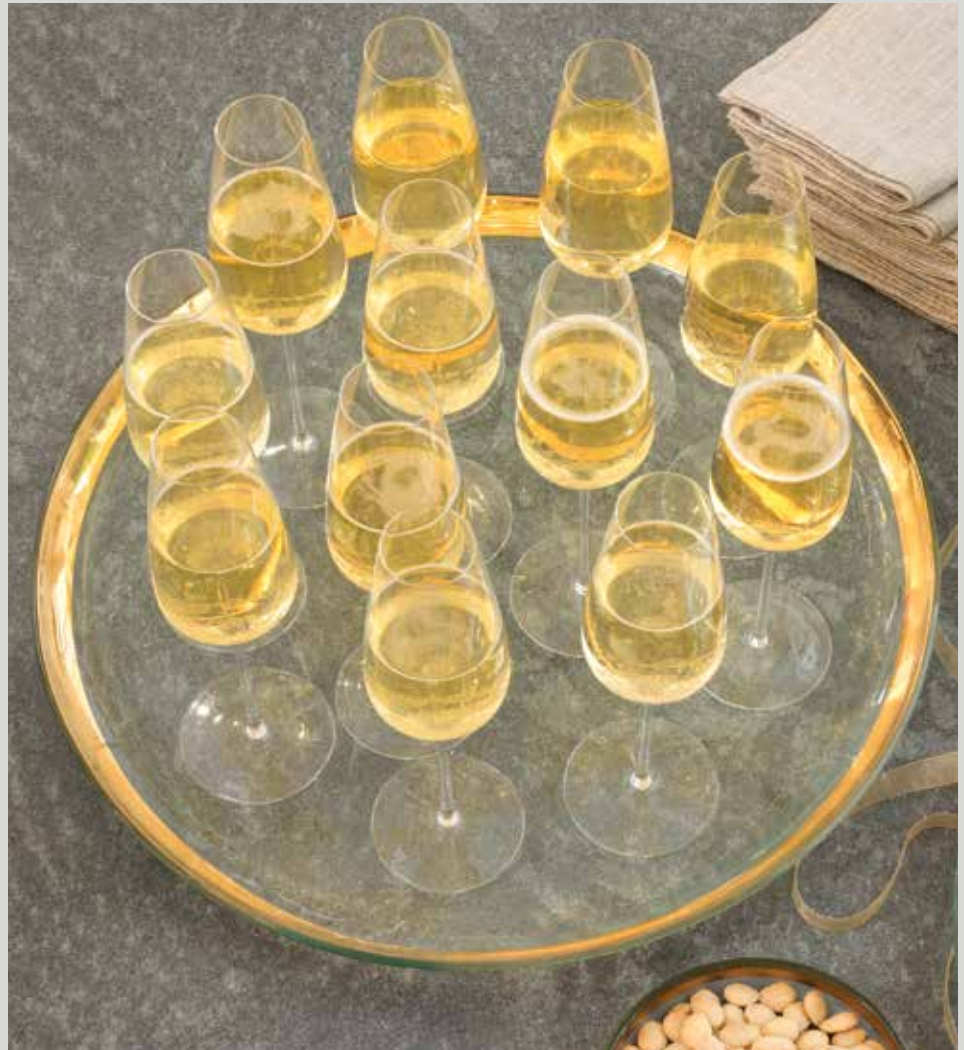
G/P 105
9" deep bowl, 15 oz
\$82 MSRP 202339



G/P 106
10" dinner plate
\$88 MSRP 202342



G/P 109
12" buffet plate
\$109 MSRP 202352



G/P 114
19 1/2" round party platter
\$317 MSRP 2023151



G/P130
14 ½ x 10" martini tray
\$193 MSRP 202392



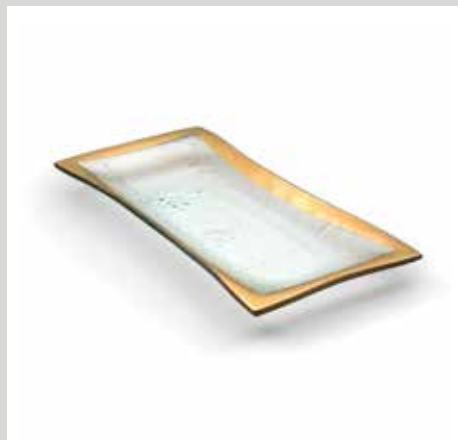
G/P131
8" wine coaster
\$80 MSRP 202338



G/P133
17 x 12 ½" chip & dip
\$214 MSRP 2023102



G/P141
14 x 5 ½" 3-section tray
\$101 MSRP 202348



G/P143
11 x 5" olive tray
\$82 MSRP 202339



G/P161
7 ¼ x 5" sauce bowl
\$67 MSRP 202332

ROMAN ANTIQUE



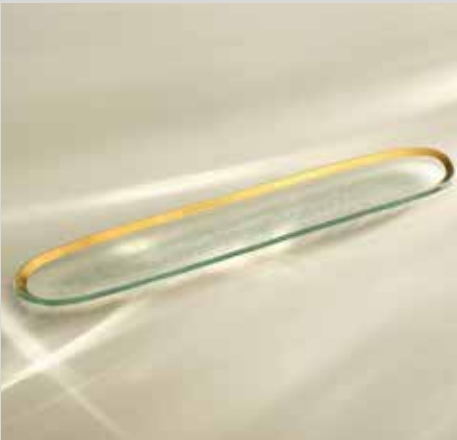
G/P 165
13 ¼" wok bowl
\$214 MSRP 2023102



G/P 168
11 x 7" asparagus bowl
\$103 MSRP 202349



G/P 170
16 ¾ x 6 ¾" oblong pastry plate
\$164 MSRP 202378



G/P 175
16 ¾ x 3 ½" cracker tray
\$90 MSRP 202343



G/P 177
11 x 11" large 4-point bowl
\$147 MSRP 202370



G/P 202
5" small square dish
\$57 MSRP 202327



G/P 213
18 ¾ x 12 ¼ buffet server
\$237 MSRP 2023113



G/P 214
13 ½ x 6" appetizer tray
\$101 MSRP 202348



G/P 227
14 x 10 ½" steak platter
\$193 MSRP 202392



G/P 216
11 ½" deviled egg platter
\$137 MSRP 202365



G/P 235
12 ½ x 12 ½" square cake stand
\$326 MSRP 2023155



G/P 236
12 x 8" vanity tray
\$137 MSRP 202365



G/P 242
17" celebration bowl
\$294 MSRP 2023140



G/P 243
25 x 5 1/4" luxe tray
\$284 MSRP 2023135



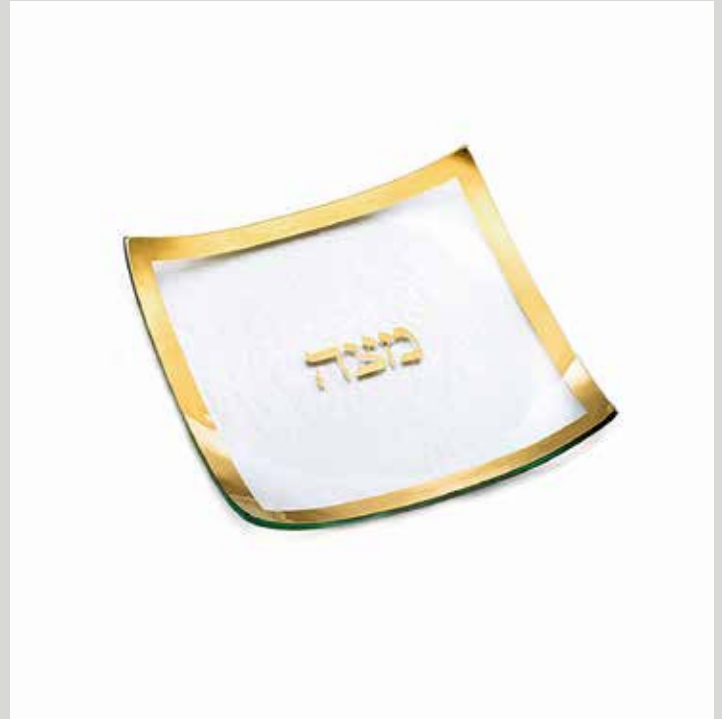
G/P 245
11 1/2" medium serving bowl
\$147 MSRP 202370

JUDAICA

Our sophisticated, best-selling Judaica pieces are designed to be treasured heirlooms for weddings, anniversaries, and holidays.

Thick borders of pure 24 karat gold or genuine platinum create celebratory elegance and accentuate any style, from modern tableware to delicate porcelain.

STYLE TIP: Judaica servingware matches beautifully with our Roman Antique Collection.



J107 G/P
10 x 10" square Matza plate
\$147 MSRP 202370



J113 G/P
15 1/2" Seder plate
\$284 MSRP 2023135



J117 G/P
11 x 7" Challah platter
\$284 MSRP 2023135

RUFFLE



An undeniable classic, Ruffle is versatile enough to light up wedding celebrations or add a splash of 24 karat beauty in everyday life.

This opulent, formal style is beloved for its versatility as weddingware, flattering nearly every classic china pattern. With a thick, undulating rim of genuine gold or platinum, the Ruffle Collection is a coveted heirloom that lights up any celebration — or even a casual dinner table.

Annie's expert craftsmanship is on full display in these curving lines, embodying wabi-sabi — a Japanese aesthetic philosophy that embraces asymmetry and “imperfection” as enhancement of an object's beauty and meaning.

A full collection of glass dinnerware, serving bowls, wine coasters, platters, cake stands, and home décor make Ruffle one of Annie's most collected and cherished designs.



G/P128
14 ¼" cake stand (5" high)
\$403 MSRP 2023192

G/P129
9 ½" salad plate
\$78 MSRP 202337



G/P135
7" bowl
\$74 MSRP 202335



G/P136
11" dinner plate
\$105 MSRP 202350

RUFFLE



G/P139
9 1/2" petit fours stand
\$249 MSRP 2023118



G/P144
13" buffet plate
\$118 MSRP 202356



G/P181
14 1/2 x 9 1/2" oval platter
\$214 MSRP 2023102



G/P183
17 x 6 3/4" rectangular tray
\$216 MSRP 2023103



G/P185
7 3/4" wine coaster
\$95 MSRP 202345



G/P 205
15" square tray
\$246 MSRP 2023117



G/P 207
14 ¾ round chip & dip
\$216 MSRP 2023103



G/P 208
10 ¾ x 13 ½" breadbasket
\$216 MSRP 2023103



G/P 209
11 ½" square server
\$176 MSRP 202384

RUFFLE



G/P 211
15" large salad bowl
\$294 MSRP 2023140



G/P 212
8 ¼ x 6 ½" dip bowl
\$86 MSRP 202341



G/P 218
19 x 12" large shallow oval bowl
\$260 MSRP 2023124



G/P 229
11 ¼ x 7" rectangular bowl
\$141 MSRP 202367



G/P 233
13 x 6" mini oval tray
\$137 MSRP 202365



G/P 237
20" giant round platter
\$374 MSRP 2023178



G/P 244
18 x 12" oval chip & dip
\$281 MSRP 2023134



G/P 239
11 1/2" square cake plate
\$326 MSRP 2023155

SALT



One of our simplest and most elegant (and best-selling) collections, Salt is a keystone of the Annieglass repertoire. The Salt Collection's nature-inspired purity embodies Annie's signature take on the craft of glassmaking. Clear glass is textured with coarse sea salt for a rough underside and smooth surface.

Available in a full dining and serving set, Salt's mesmerizing, clean look and feel is versatile enough for everyday dining or stylish celebrations.

GIFTING TIP: Ideal for those who want a subtle splash of everyday luxury and appreciate glass for its pure, light-catching simplicity.



SA100
7" side plate
\$57 MSRP 202327



SA101
7 1/4" small bowl
\$61 MSRP 202329



SA102
10" salad plate
\$61 MSRP 202329



SA106
12" dinner plate
\$63 MSRP 202330



SA110
10" medium bowl
\$65 MSRP 202331



SA111
12" large bowl
\$80 MSRP 202338



SA112
13" XL serving bowl
\$90 MSRP 202343



SA113
13 3/4" charger
\$74 MSRP 202335



SA117
16 x 11 1/4 medium oval tray
\$86 MSRP 202341



SA119
11 x 18" oval serving bowl
\$95 MSRP 202349



SCULPTURE



Adorn your home with an icon of American Craft tradition. Forever experimenting with the dynamic movement and texture of glass, Annie continues to develop new Sculptures within her diversely styled collections and as stand-alone works.

Ideal for avid collectors and new fans of artisan glasswork, Annieglass Sculptures are unique shapes that illustrate Annie's dedication to preserving and expanding the legacy of handcrafted artistry.



ANI00G
 20 x 18 x 8" large Anemone frosted with gold trim
 \$363 MSRP 2023173

ANI01G
 15 x 14 x 7" small Anemone frosted with gold trim
 \$284 MSRP 2023135



AN300G
 20 x 18 x 8" large Splatter frosted with gold
 \$397 MSRP 2023189

AN301G
 15 x 14 x 7" small Splatter frosted with gold
 \$340 MSRP 2023162

SCULPTURE



AN500U
20 x 18 x 8" Anemone Ultramarine
\$363 MSRP 2023173



LIMITED EDITION OF 500

DW525
22 x 25 x 9" Dogwood bowl
\$617 MSRP 2023270



F300G
15 x 22 x 4 ½" Petal frosted with gold trim
\$307 MSRP 2023146



F510G
16 x 21 x 15" Clamshell frosted with gold trim
\$504 MSRP 2023216



F520G
28 x 20 x 8 ½" Water sculpture bowl frosted with gold trim
\$617 MSRP 2023270



TP100G
15 x 8 ½" Tulip sculpture frosted with gold trim
\$363 MSRP 2023173



LIMITED EDITION OF 500

F525G

22 x 25 x 9" Poppy sculpture bowl frosted with gold trim
\$617 MSRP 2023270

SCULPTURE



U505
20 x 16 ½ x 6 ½" mini splash bowl
\$340 MSRP 2023162

U530
14 x 11" Azure
\$294 MSRP 2023140



LIMITED EDITION OF 500

U520
28 x 20 x 8 ½" Water sculpture bowl
\$617 MSRP 2023270

SHELLS / FROSTED

In 2006, the Smithsonian American Art Museum acquired Coquina and Tiburon. They are proudly featured in the museum's permanent collection.

Coquina SSI04G
Smithsonian acquisition number:
1996.87.3



Tiburon SSI08G
Smithsonian acquisition number:
1996.87.1



Sculpture or serving dish? Your eye decides.

The Shells Collection tiptoes across the line between art and tableware — and earned Annie's place in the Smithsonian American Art Museum (where Tiburon and Coquina are housed in the permanent collection).

These organic, sculptural shapes of frosted glass are trimmed with glimmering precious metal edges,

proclaiming Annie's passion for her craft. It is on full display in these artistic expressions of traditional American Craft.

STYLE TIP: While the sculptural Shells are perfect for artful home decor, this collection comes in a full dining set — and is beloved by nature-inspired chefs and, of course, seafood lovers.

SHELLS / FROSTED



BC105G
9" salad plate
\$63 MSRP 202330



BC106G
10" dinner plate
\$74 MSRP 202335



BC109G
12" buffet plate
\$82 MSRP 202339



RS401G
4 x 6" dish
\$55 MSRP 202326





SS104G
 7 ½ Coquina
 \$57 MSRP 202327
 *Smithsonian American Art Museum



SS105G
 10" Abalone
 \$76 MSRP 202336



SS107G
 14 x 16 ½" Volute
 \$214 MSRP 2023102



SS108G
 21 x 9 ½" Tiburon
 \$160 MSRP 202376
 *Smithsonian American Art Museum



SS222G
 8 x 8 ½" Clam shell
 \$67 MSRP 202332



SS223G
 8 ½ x 6" medium Nautilus
 \$74 MSRP 202335

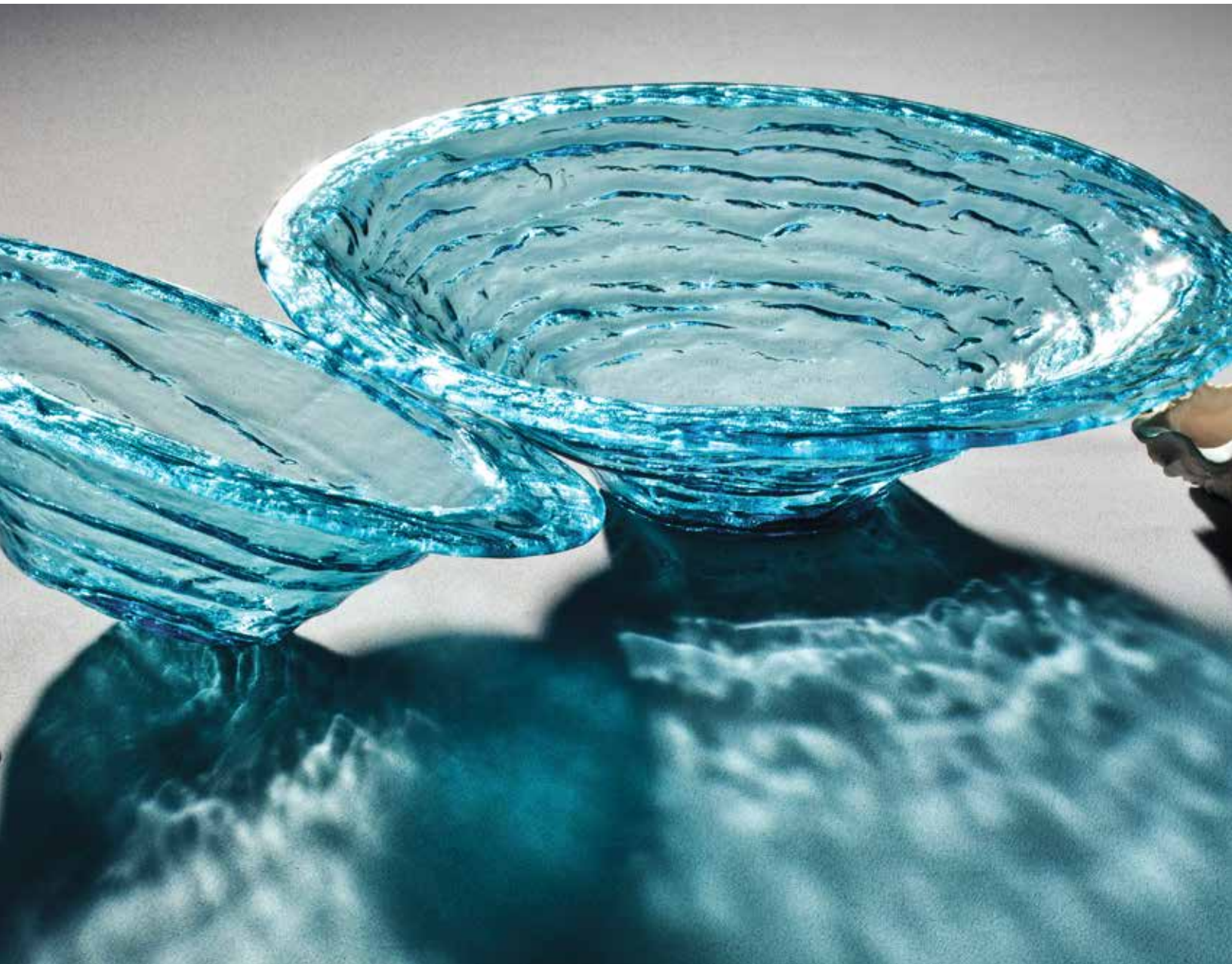


SS224G
 12 ½ x 8 ½" large Nautilus
 \$82 MSRP 202339



SS225G
 11 ½ x 6 ½" Oyster shell
 \$84 MSRP 202340

SHELLS / ULTRAMARINE



Adorn your table with the shape of water. Brilliant aqua-hued glass evokes bubbling rivers, foaming waves, and rippling lakes in the iconic Ultramarine Collection.

Ultramarine evokes the soothing essence of water with vibrant turquoise shells, turtles, and freeform shapes. Annie drew on the evanescent ripples and vibrant color Monterey Bay to create this adored collection. Style tip: A dreamy gift for fans of turquoise blue, or as an addition for any beach-side retreat or lake house.

Annie's unparalleled Shells Collection, now in the stunning turquoise glass of Ultramarine. This collection brings even more magic to the oceanic essence of one of Annieglass' most recognizable designs. Styling Ultramarine and Frosted Shells together creates a tablescape reminiscence of ocean and fog, sea and sky.



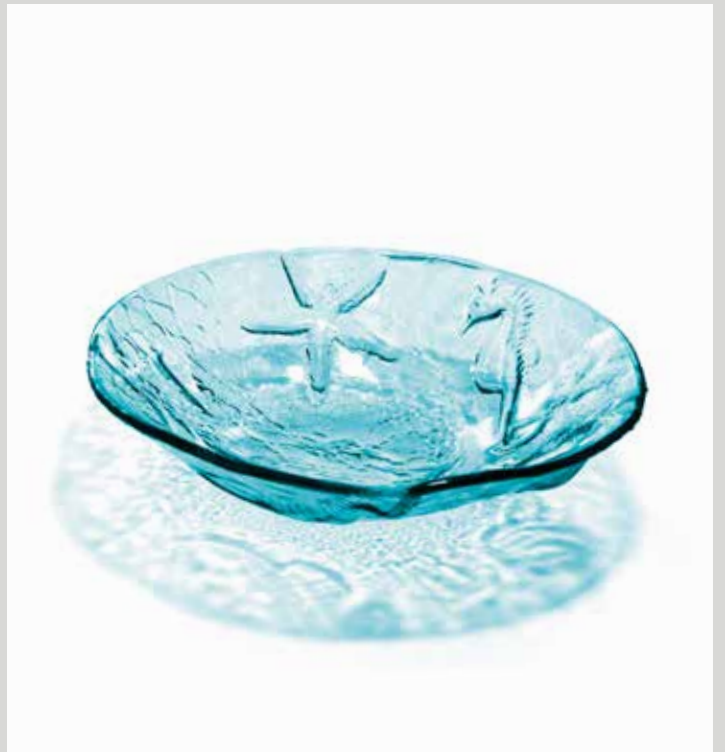
U105
9" salad plate
\$61 MSRP 202329



U106
10" dinner plate
\$63 MSRP 202330



U109
12" buffet plate
\$74 MSRP 202335



U110
12" bowl
\$101 MSRP 202348



U115
12 ½ X 7 ½" oval tray
\$86 MSRP 202341



U210
12 ½" small rimmed serving bowl
\$126 MSRP 202360



U212
16 ½" large rimmed serving bowl
\$187 MSRP 202389



U217
15" round bowl
\$90 MSRP 202343



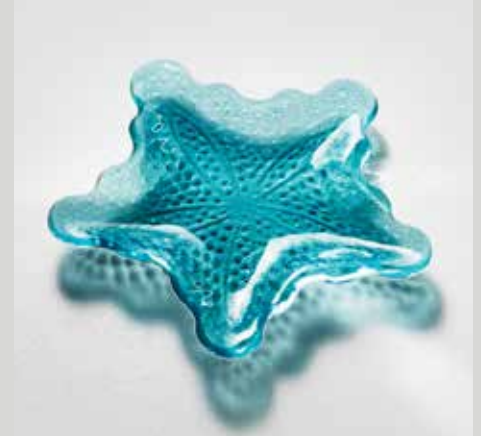
U222
8 x 8 ½" Clam shell
\$63 MSRP 202330



U223
8 ½ x 6" medium Nautilus
\$63 MSRP 202330



U224
12 ½ x 8 ½" large Nautilus
\$67 MSRP 202332



U227
8 ¾" Starfish
\$57 MSRP 202327



SE301U
10 x 7 ¼" medium Turtle bowl
\$63 MSRP 202330

SPLATTER



Influenced by the street art style of Annie's son, Taylor Reinhold, the Splatter Collection experiments with the cross-over between sculpture and serving.

One of Annie's newest and most artful creations. Splatter is made to play! Express your creative side with three sizes of serveware and two incredible sculptures. Created intentionally to mix-and-match, these frosted

glass pieces with stunning drips of matte 24 karat gold pair excitingly with the graffiti-inspired Jaxson or faceted Edgy Collections.

STYLE TIP: The square Splatter bowl best expresses the movement of the dripping gold, while the rectangular tray and square platter become any table's statement pieces.



SPL177G
11" square bowl
\$200 MSRP 202395



SPL203G
12" square platter
\$200 MSRP 202395



SPL118G
17 ¼ x 8 ½" rectangular tray
\$200 MSRP 202395



AN300G
20 x 18 x 8" large Splatter frosted with gold
\$397 MSRP 2023189

VOTIVES



Add one-of-a-kind flair to the table with our freeform candle votives. Frosted glass in two styles capture the movement of glass, warming any room with mesmerizing, light-catching sparkles. Line the center of the dining table with glowing votives or place on a staircase to add a magical touch to gatherings.



AN102
7 x 7 x 4" Anemone votive-no trim
\$95 MSRP 202345

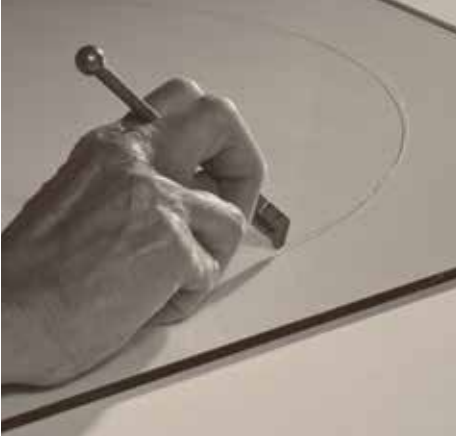


HV100G
4 x 4 x 3" handkerchief-gold
\$67 MSRP 202332



HV200G
7 x 7 x 5" XL handkerchief-gold
\$103 MSRP 202349

OUR PROCESS



Annie's imaginative designs are cut from durable, architectural grade glass.



Edges are ground smooth, making each piece of Annieglass more chip-resistant than fine china or stoneware.



Artisans hand-paint bands of precious metal onto rims of the cut and ground glass, visible brush strokes show the beauty of handcraft.



Each piece of Annieglass is carefully loaded by hand into a kiln for firing, aligned on a handmade ceramic mold which will give the glass its texture and shape.



During firing, glass melts into ceramic molds and precious metals permanently fuse to the glass, rendering each piece unique in shape and dishwasher safe for utmost functionality.



Finally, each piece is individually inspected to ensure quality, before being hand-engraved with the studio signature—a proud designation of Annieglass' authenticity and integrity.

INNOVATING THE ANCIENT ART
OF GLASSMAKING THROUGH
CREATIVITY AND CUTTING EDGE
TECHNOLOGY FOR 40 YEARS

Motivated by a fascination with glass and a creativity that pushes the bounds of traditional glassmaking, Annieglass has spent years experimenting with raw materials and innovative techniques, evolving and ultimately perfecting the ancient art of glass slumping to create unique sculptural décor, tableware and gifts for the home. Transforming the ordinary into something extraordinary, each piece of Annieglass passes hand to hand between artisans during our six-step, small-batch glassmaking process, eliciting a genuine pride for the craft and exacting standards for the finished glassware.



Annieglass
310 Harvest Drive
Watsonville, CA 95076
831.761.2041
www.annieglass.com
f t i p

SINCE 1983