



BOBOBO



BOBO1325

BOBO1325 is an award winning, innovative, design brand founded by designer Beth Travers, whose collections are intricately designed from her Manchester HQ. We pride ourselves on offering a range of illustrated collections inspired by the symphony of the social conscious and the world in which we live, bringing into existence designs that are both provocative and captivating; to deliver wallpapers, fabrics, luxurious home accessories and artwork.

Come with us

We invite you into our world, drawing you further in to the intoxicating depths and design layers. They're raw yet poetic. Delicately pretty but with undertones of mischief and a pure rebel spirit. Find yourself delving deeper and deeper, evoking a kaleidoscope of memories, dreams and emotions with every glance, in such a way, you never want to be found. Feel the freedom of letting your imagination run wild, for we all have elements of bold and wild within.

BOBO1325 embodies a passionate and rebellious maximalist spirit, daring you to go bold harmoniously with both patterns and riots of colour. All collections have a story to unfold, whether it be mental health, climate change, gender equality, plastic pollution or folklore. Designs for intrigue and for art, it's more than a pretty pattern it's a statement, interlaced with biophilia bringing the outside in and enveloping you in the affinity of nature.

Your interior spaces will come alive with BOBO1325 they're both a story and discovery. Designs you look into rather than look at.

Be Brave. Be Bold. Be Wild. Be Free. Be Inspired.

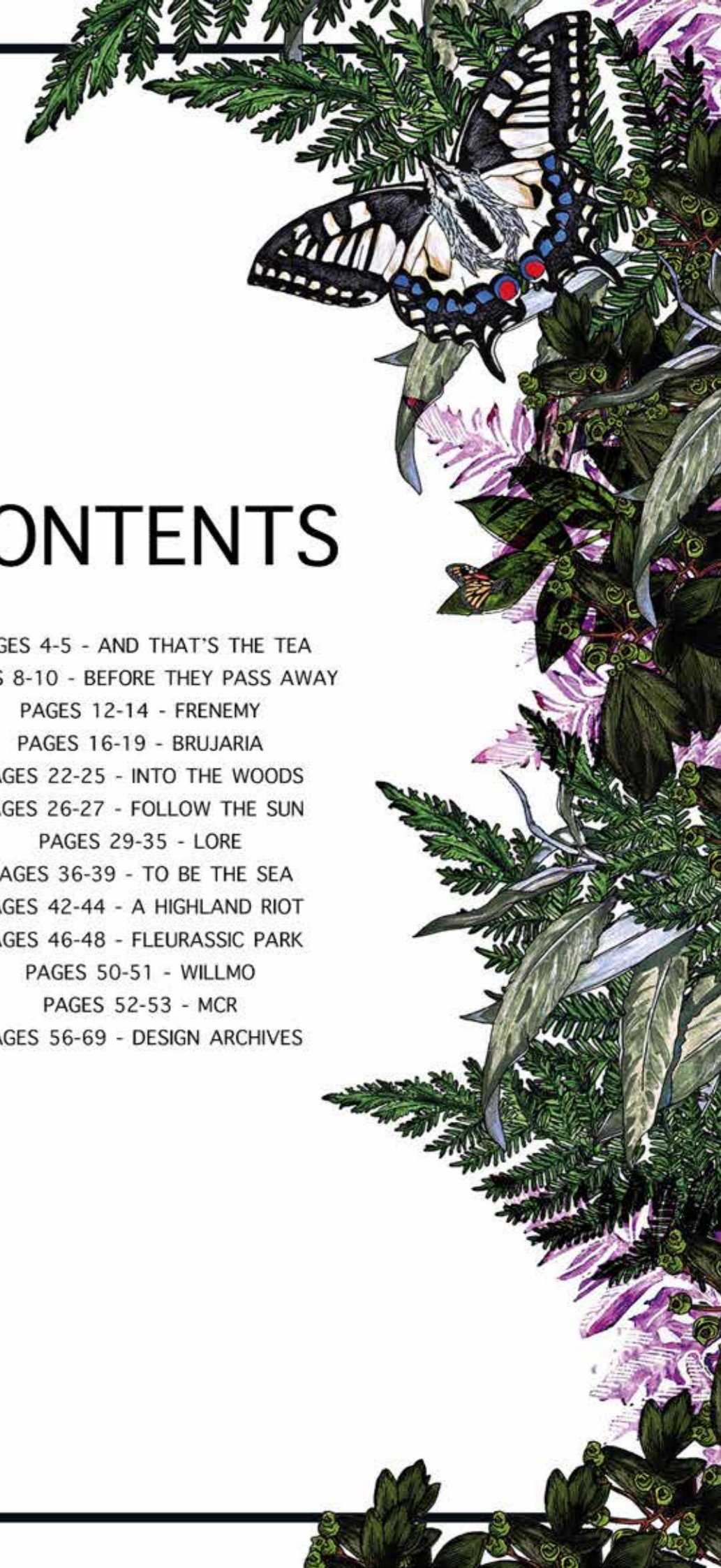
Have an idea for a bespoke project? we'd love to hear from you



STUDIO@BOBO1325.COM
+447852990697
BOBO1325 Studio 404e
Awol Studios, Hope Mill
113 Pollard Street, Manchester
M47JA

CONTENTS

PAGES 4-5 - AND THAT'S THE TEA
 PAGES 8-10 - BEFORE THEY PASS AWAY
 PAGES 12-14 - FRENEMY
 PAGES 16-19 - BRUJARIA
 PAGES 22-25 - INTO THE WOODS
 PAGES 26-27 - FOLLOW THE SUN
 PAGES 29-35 - LORE
 PAGES 36-39 - TO BE THE SEA
 PAGES 42-44 - A HIGHLAND RIOT
 PAGES 46-48 - FLEURASSIC PARK
 PAGES 50-51 - WILLMO
 PAGES 52-53 - MCR
 PAGES 56-69 - DESIGN ARCHIVES





AND THAT'S THE TEA

It's about the power of the cup of tea.

Never has there been a drink quite like tea, it's a drink that has the power to link cultures together both ceremonially and socially. It's been a social drink in Britain for centuries no matter a persons status, class or rank. But all over the world it has a representative meaning.

It's truly stood the test of time, from ladies and high tea, to the workers and to millennials. Tea is the answer. We synchronise brew breaks for a gossip we drink herbal teas for the health benefits and natural healing. Not forgetting a good cup of Yorkshire to cure heartbreak and dare I say it...hangovers.

Taking inspiration from a variety of design periods to construct the pattern, with classic floral elements from orchids, peony's and delphiniums (a flower that represents the transcendence of time and space - which in my opinion a good cup of tea takes us to!) Linking eastern culture to where tea leaves were first discovered to western culture after King Charles II first introduced it to Britain.



GREEN TEA



MATCHA



BLACKCURRENT



LIQUORICE



ROSEWATER



WILD BERRY



MILK



EARL GREY



QBIC HOTEL - MANCHESTER, UK



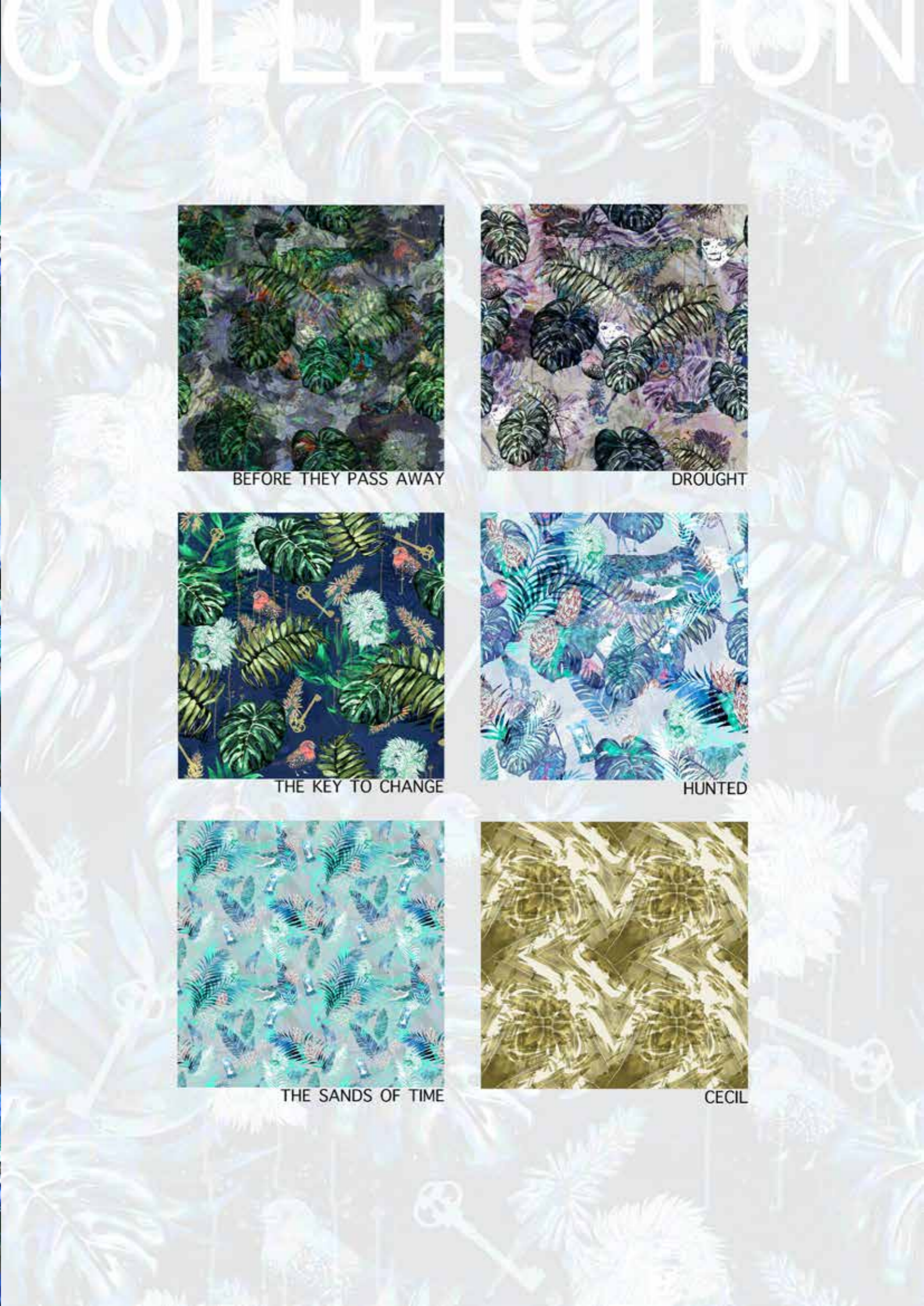
PRINCESS ST HOTEL - MANCHESTER, UK



BEFORE THEY PASS AWAY

BEFORE THEY PASS AWAY
THE KEY TO CHANGE
DROUGHT
HUNTED
THE SANDS OF TIME
CECIL

Before They Pass Away is an African inspired collection, with a global meaning. It's a jungle out there! Be adventurous and immerse yourself in this visual tale, carefully peeling back the layers to get lost amongst the dense foliage taking yourself on a journey of discovery. Encounter the hidden objects and camouflaged wildlife throughout the intricate layers. This collection is designed to highlight global warming and the plight that hunting and the ever-present threat of extinction are having on our planet. Change your thinking and you can change the world. Appreciate earth and it's inhabitants, celebrate and learn from our diverse cultures and be wowed by the nature that surrounds us.



BEFORE THEY PASS AWAY



DROUGHT



THE KEY TO CHANGE



HUNTED



THE SANDS OF TIME



CECIL



KEY TO CHANGE - JUNGLE



KEY TO CHANGE - BURGUNDY



THE KEY TO CHANGE - INK



HUNTED - SAND



CECIL - MIDNIGHT



CECIL - BLUSH





FREEMY

Inspired by Joy Division's 'Love Will Tear Us Apart.' A human being has the capacity to be their own best friend and their own worst enemy with the blink of an eye. We are both Saint and Sinner. Jury and Executioner. Freemy explores the depths of the human psyche and social conscious. The delicate tones for the days we feel saintly whilst the darker shades depict the darker side of humanity. Come with me and walk the fine line between pleasure and pain of love, life and friendships with a certain sense of ethereal fluidity juxtaposed with strong black...then of course there's the other kind



FREEMY - BISCUIT



FREEMY - GREEN



FREEMY - BLUE



FREEMY - BLORANGE



FREEMY - GREYSKULL



FREEMY - NIGHTFALL



FREEMY - BLACK



FREEMY - HUES

COLOURWAY




FREEMY - MIDSUMMER



FREEMY - WARM AMBER





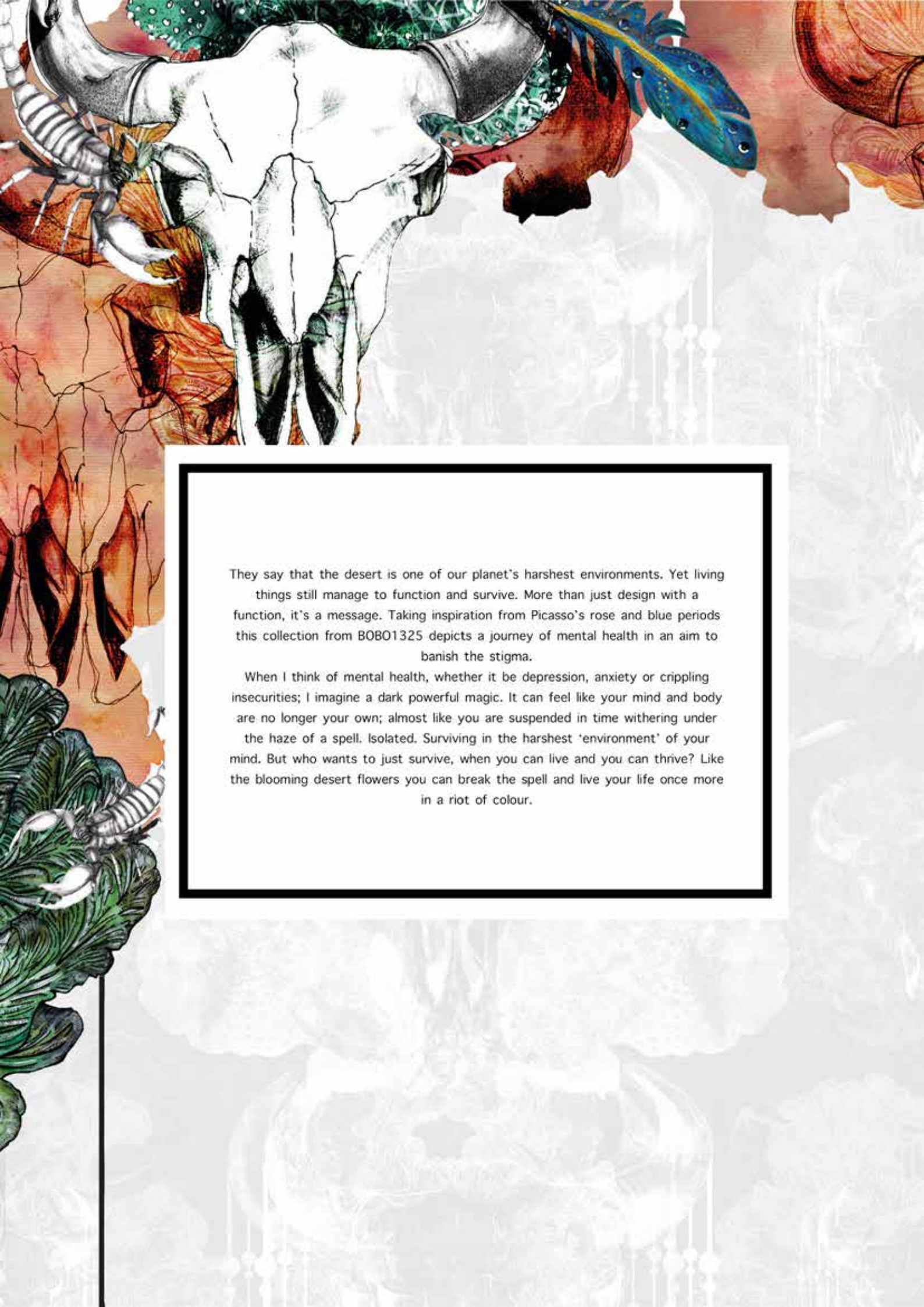
BRUJARIA

SANDSTORM

BRUJA

MOJAVE

THE VALLEY OF FIRE



They say that the desert is one of our planet's harshest environments. Yet living things still manage to function and survive. More than just design with a function, it's a message. Taking inspiration from Picasso's rose and blue periods this collection from BOBO1325 depicts a journey of mental health in an aim to banish the stigma.

When I think of mental health, whether it be depression, anxiety or crippling insecurities; I imagine a dark powerful magic. It can feel like your mind and body are no longer your own; almost like you are suspended in time withering under the haze of a spell. Isolated. Surviving in the harshest 'environment' of your mind. But who wants to just survive, when you can live and you can thrive? Like the blooming desert flowers you can break the spell and live your life once more in a riot of colour.



SANDSTORM



BRUJA



MOJAVE



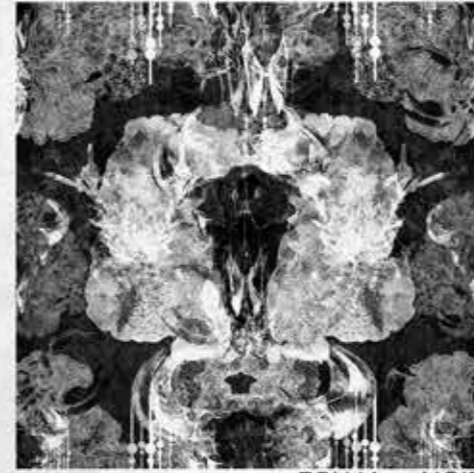
THE VALLEY OF FIRE



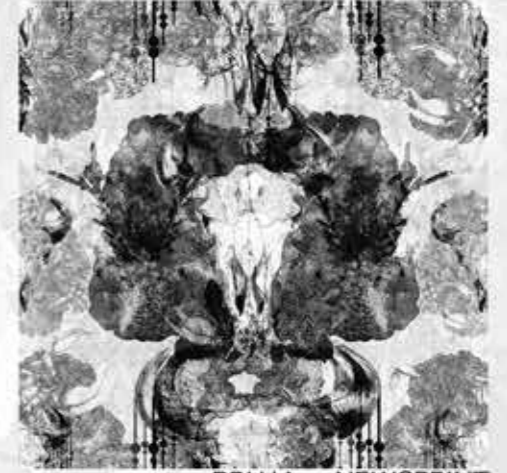
BRUJA - NAVY



BRUJA - ICE



BRUJA - NOIR



BRUJA - NEWSPRINT



BRUJA - GREY



MOJAVE - PLUM



MOJAVE - ROUGE



MOJAVE - 3D



QBIC HOTEL - MANCHESTER, UK



QBIC HOTEL - MANCHESTER, UK

INTO THE WOODS

WILDWOOD
FAWN OVER
INTO THE WOODS
GROVE

This collection features our intricate hand drawn botanicals in an array of deep botanical greens to immerse you in a biophilic wonderland, interspersed with woodland creatures for a wild interior vibe.

This design collection focuses on the harmony of bringing the outside into your interior space and the health benefits that it brings. The collection makes a stylish statement to your interior.



WILDWOOD



FAWN OVER



INTO THE WOODS



GROVE

COLOURWAY



WILDWOOD - NUDE



WILDWOOD - PINK



WILDWOOD - BISCUIT



WILDWOOD - CHARCOAL



WILDWOOD - MIDNIGHT



FAWN OVER - WINE



FAWN OVER - BLACK



FAWN OVER - EMERALD



INTO THE WOODS - NUDE



INTO THE WOODS - MINT



INTO THE WOODS - CORNFLOWER



GROVE

COLOURWAY



FOLLOW THE SUN

FROM THE CROWD
FOLLOW THE SUN
AMONG THE GUM TREES

This collection features our intricate hand drawn botanicals in an array of warm tones to envelop you in a biophilic wonderland, interspersed with black and white cockatoos. Why fit in? when you were born to stand out.

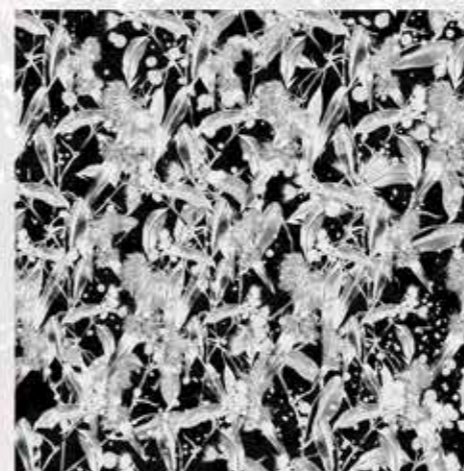
This design collection focuses on the harmony of bringing the outside into your interior space and the health benefits that it brings. The collection makes a stylish statement to your interior, daring you to be different and following your own sun. When your heart and soul are aligned - magic is created.



FOLLOW THE SUN



FROM THE CROWD



AMONG THE GUM TREES - BLACK



AMONG THE GUM TREES - LEMON



LORE

BLACK MOUNTAIN EXCALIBUR
FERNDALE
FAN DANCE

Folklore Collection, drawing inspiration of tales full of magic and wonder of Welsh mythology. History and majestic landscape from days gone by such as: King Arthur and Excalibur, Boudica and Rhiannon not to forget the dragons.



COLLECTION



BLACK MOUNTAIN EXCALIBUR



BLACK MOUNTAIN - CYMRU



FERNDALE



BLACK MOUNTAIN - AMBER



FAN DANCE



FAN DANCE - BLUE

COLIBRARY



FESPA
AWARDS
GOLD
WINNER
2020

AWARD WINNING LEILA LILY'S NEWCASTLE



FESPA
AWARDS
GOLD
WINNER
2020

AWARD WINNING LEILA LILY'S NEWCASTLE



HERO AND LEANDER



THE STORM OF HERO & LEANDER

LORE

HERO AND LEANDER
THE STORM OF HERO AND LEANDER

Introducing the first instalment to our 'lore' collection. Before Romeo and Juliet, Hero had Leander. Get swept away within the waves of The Storm Of Hero and Leander. I grew up listening to the tales of Greek mythology and as I have gotten older I still find myself awed and inspired by them; they're filled with passion, magic, courage and adventure, much like life. Hero and Leander is my favourite myth of all, a tragic tale of forbidden love, hope and determination.





TO BE THE SEA

ADRIFT
TO BE THE SEA
WHO CAIRNS
RISING TIDE

This enchanting design collection submerges you deep beneath the ocean waves, dive down amongst the intoxicating layers to discover the mischief and madness you have come to expect from BOBO1325. This collection has a dark side, it highlights the effects of plastic and pollution within our waters. Navigate your way through pieces of pollution to get to the fascinating depths full of vibrant splashes, ocean botanicals, mermaids and sea creatures.



ADRIFT



TO BE THE SEA



WHO CAIRNS



RISING TIDE



ADRIFT - ABYSS



ADRIFT - MELLOW



TO BE THE SEA - UV



RISING TIDE - PRUSSIAN



WHO CAIRNS - PINK



WHO CAIRNS - NEON



VERSITAL, BOLTON



QBIC HOTEL, MANCHESTER



A HIGHLAND RIOT

AUNTY BEC'S GARDEN
THE RUT
DEERSTALKER
HIGHLANDS

'A Highland Riot' is a collection inspired by the Scottish Highlands. The design has been carefully crafted from intricate illustrations drawing you in and allowing you to get lost amongst the woodland creatures and abundance of nature all native to Scotland. Designed for the wilderness lovers, the explorers and those partial to a 'wee dram'. Lets bring the outside in!



AUNTY BEC'S GARDEN



THE RUT



DEERSTALKER



HIGHLANDS



DEERSTALKER - GREEN



DEERSTALKER - MINK



THE RUT - BLUE



HIGHLANDS - INK SPLAT



HIGHLANDS - NEON



HIGHLANDS - CHEVRON





FLEURASSIC PARK

DINOFLOROUS
FLORADACTYL
FLEUROSAUROUS REX
TYRANOFLOROUS

'Fleurassic Park' is a collection born of magic and fantasy. Designed for those who want more out of their wallpaper. They want art. They want intrigue. They want beauty. They want a statement. For the girls that love dinosaurs and the boys that love flowers. Gaze in wonder at the hand illustrated and painted elements allowing you to get lost in the story of this collection, let your imagination run wild. For those quirky interior spaces not just for children.



DINOFLOROUS



FLORADACTYL



FLEUROSAUROUS REX



TYRANOFLOROUS



FLORADACTYL - PASTEL



FLEUROSAUROUS REX - BISCUIT



FLEUROSAUROUS REX - TEAL



FLORADACTYL - TEAL



DINOFLOROUS - BISCUIT



TYRANOFLOROUS - LAVENDER



FLORADACTYL - POWDER BLUE



FLEUROSAUROUS REX - BLACK

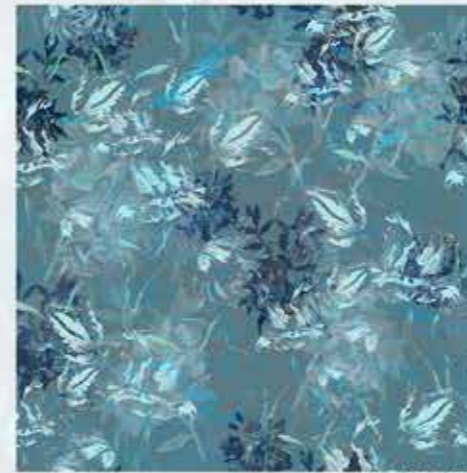


COLLECTION

WILLMO

STARK
DUSTY

'Willmo' is a contemporary floral collection inspired by the works of the original trailblazer William Morris, with a modern day twist, creating a symphonic harmony between old and new. A sophisticated vintage design, full of depth and intricate ethereal layers, adding a touch of elegance to your interior. Perfect for adorning the walls of your bedroom, living room and/or hallways.

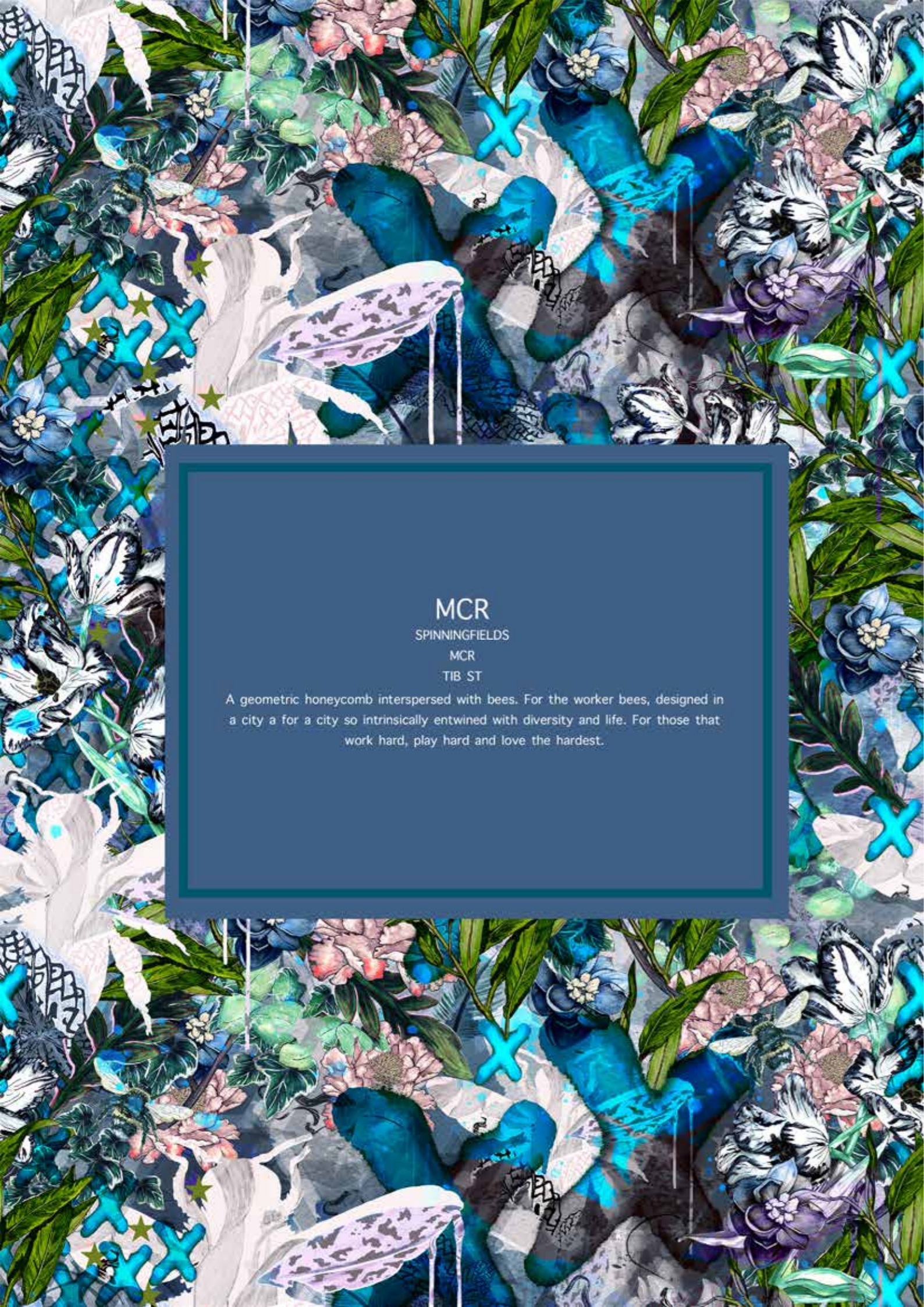


STARK



DUSTY





MCR

SPINNINGFIELDS

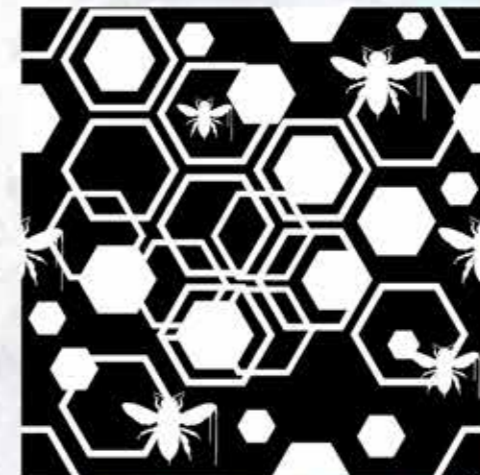
MCR

TIB ST

A geometric honeycomb interspersed with bees. For the worker bees, designed in a city a for a city so intrinsically entwined with diversity and life. For those that work hard, play hard and love the hardest.



SPINNINGFIELDS



MCR



TIB ST



QBIC HOTEL - MANCHESTER, UK



THE THREE MILE INN - GOSFORTH, UK



BOBO1325

ARCHIVES.

ALL DESIGNS ARE AVAILABLE IN NON WOVEN WALLPAPER SUBSTRATES
LICENSE FOR COMMERCIAL PRINTING AND FR UPHOLSTERY FABRIC



STUDIO@BOBO1325.COM
+447852990697
BOBO1325 Studio 404e
Awol Studios, Hope Mill
113 Pollard Street, Manchester
M47JA



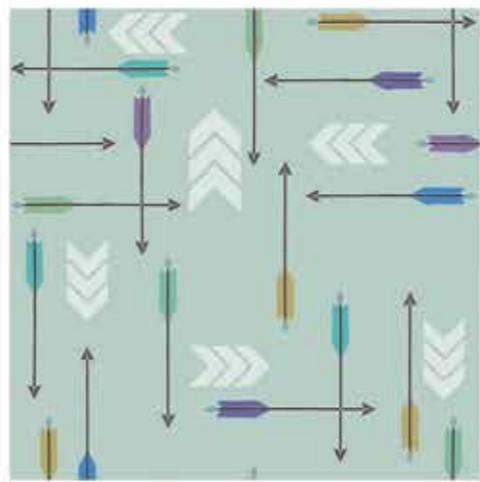
SKU001



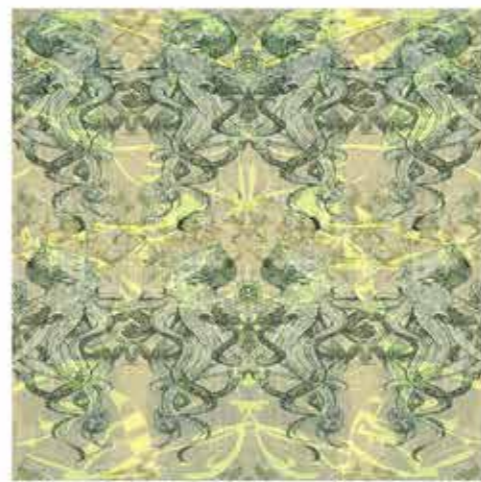
SKU002



SKU003



SKU013



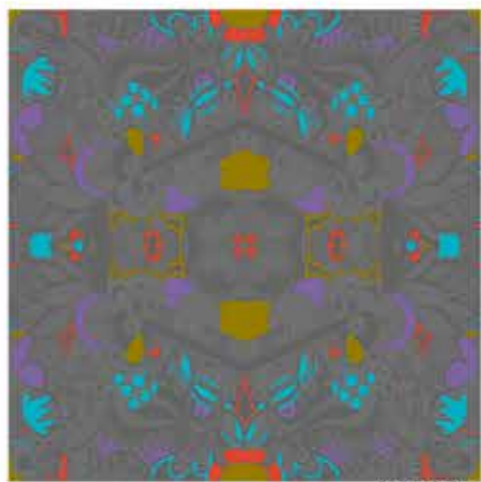
SKU014



SKU015



SKU004



SKU005



SKU006



SKU016



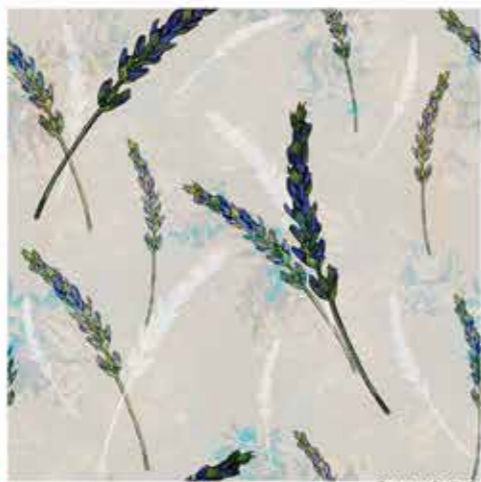
SKU017



SKU018



SKU007



SKU008



SKU009



SKU019



SKU020



SKU021



SKU010



SKU011



SKU012



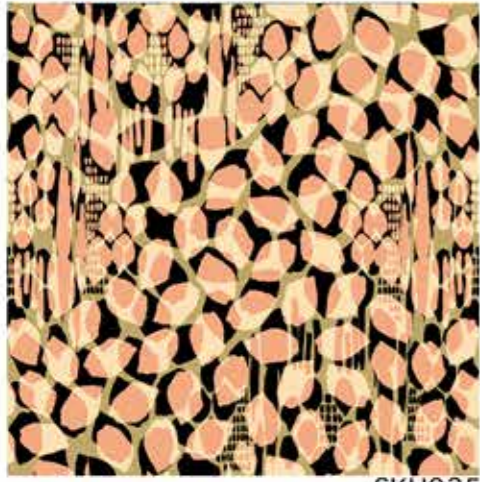
SKU022



SKU023



SKU024



SKU025



SKU026



SKU027



SKU037



SKU038



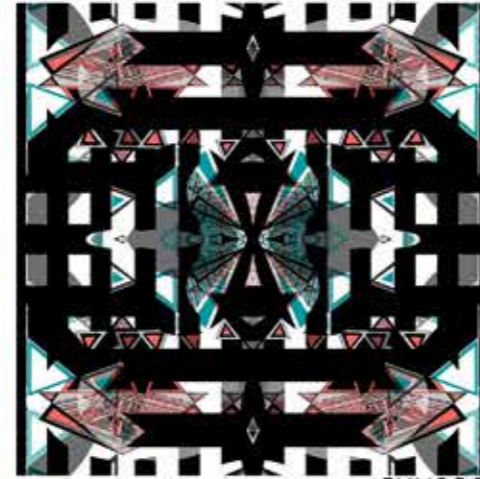
SKU039



SKU028



SKU029



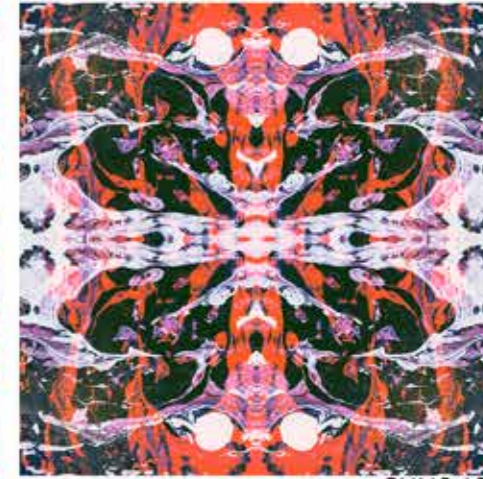
SKU030



SKU040



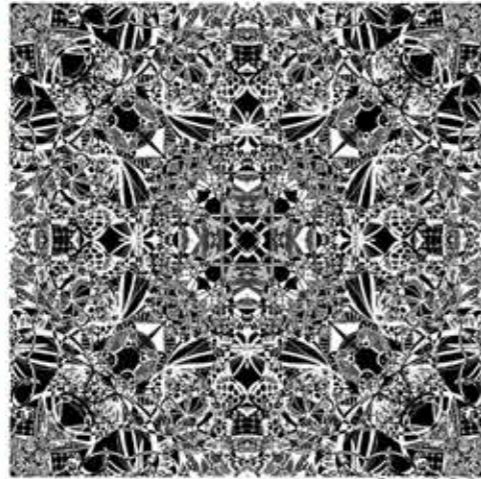
SKU041



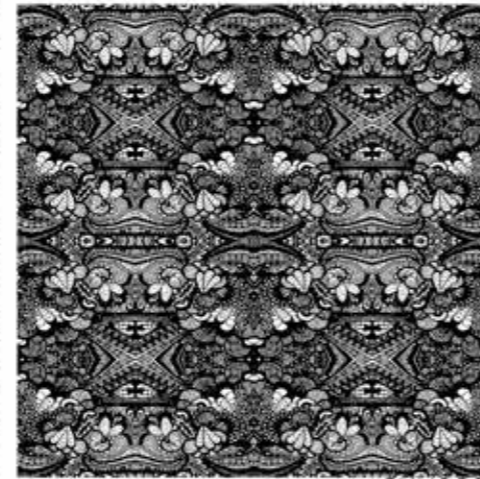
SKU042



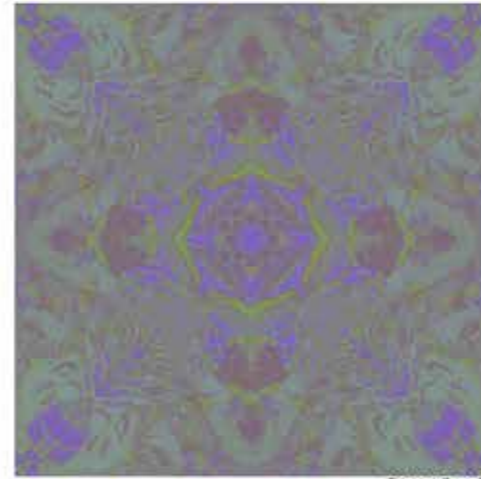
SKU031



SKU032



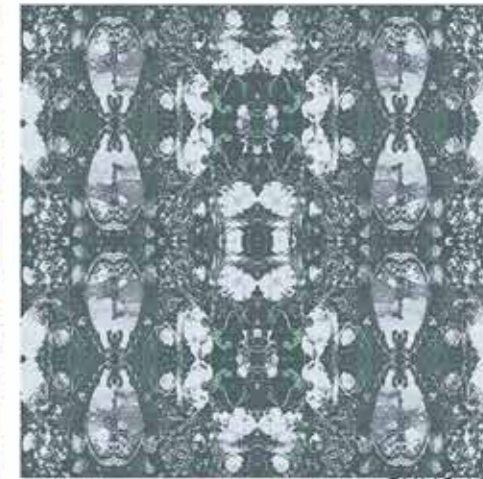
SKU033



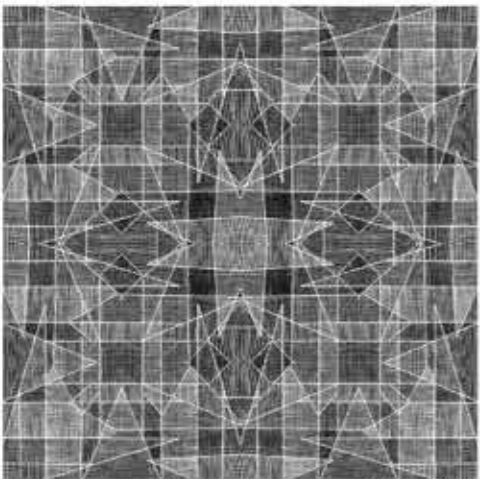
SKU043



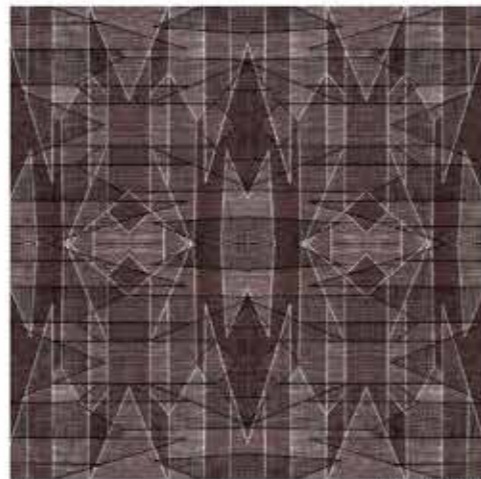
SKU044



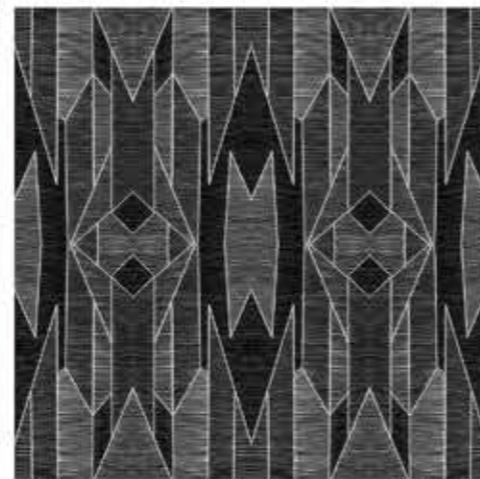
SKU045



SKU034



SKU035



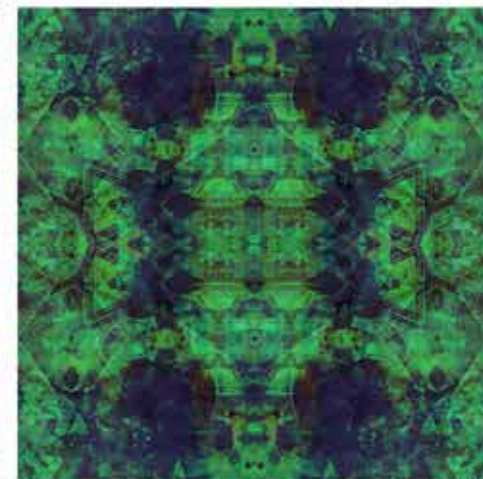
SKU036



SKU046



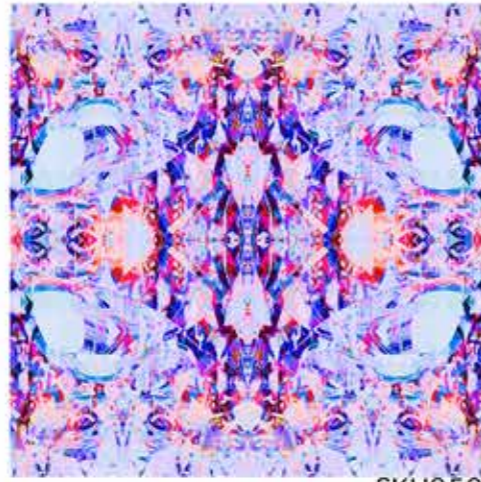
SKU047



SKU048



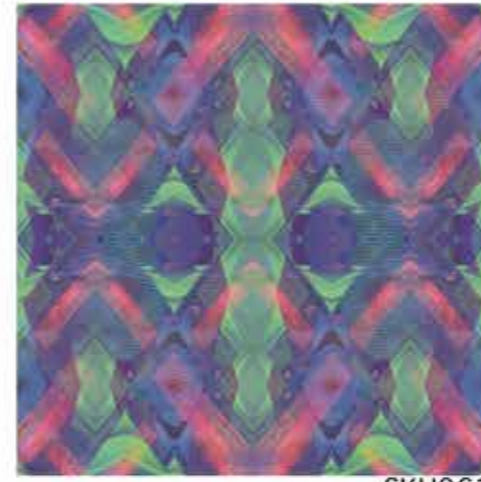
SKU049



SKU050



SKU051



SKU061



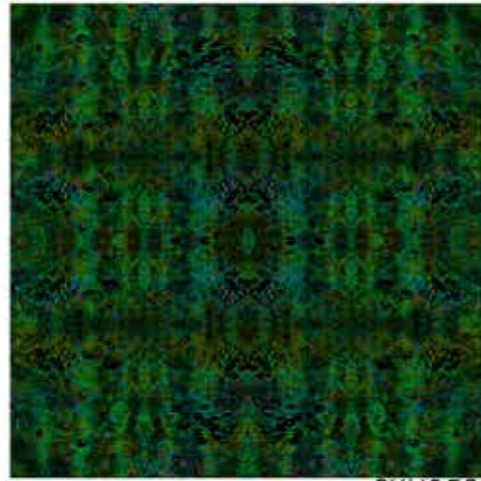
SKU062



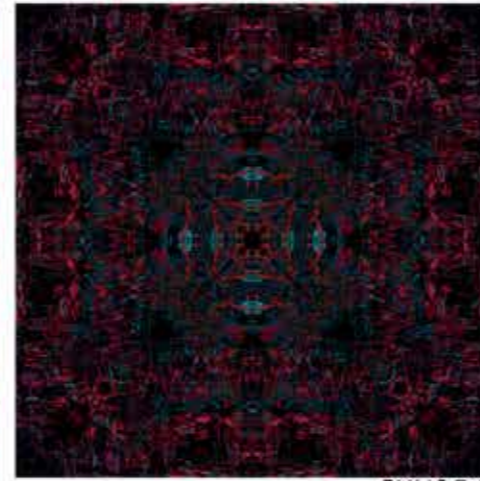
SKU063



SKU052



SKU053



SKU054



SKU064



SKU065



SKU066



SKU055



SKU056



SKU057



SKU067



SKU068



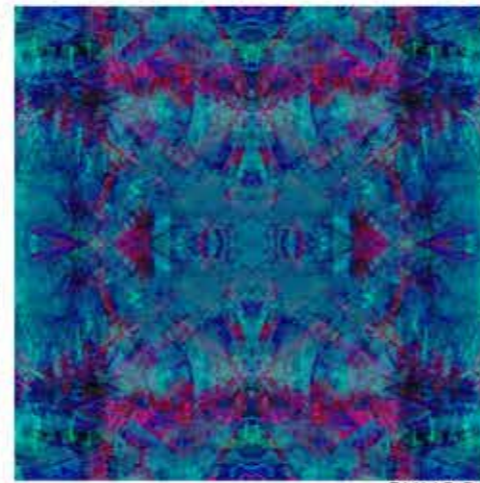
SKU069



SKU058



SKU059



SKU060



SKU070



SKU071



SKU072



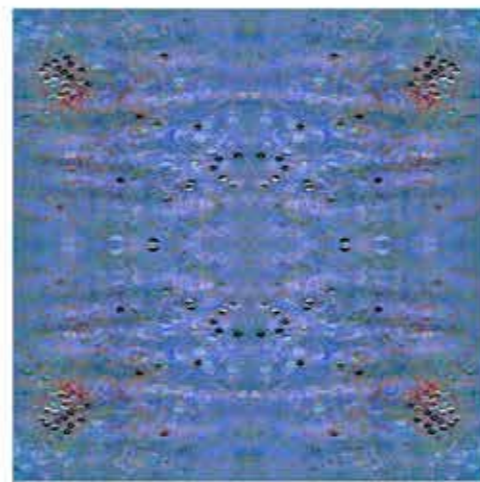
SKU073



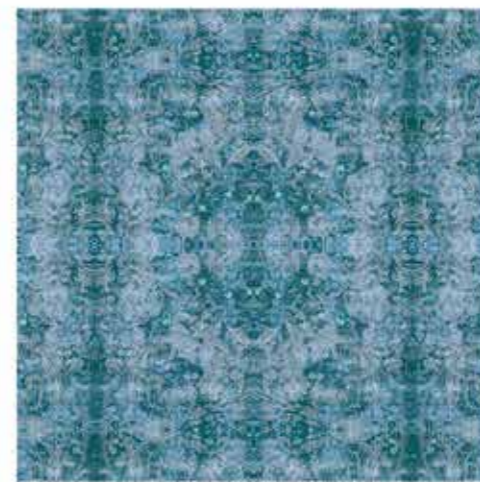
SKU074



SKU075



SKU085



SKU086



SKU087



SKU076



SKU077



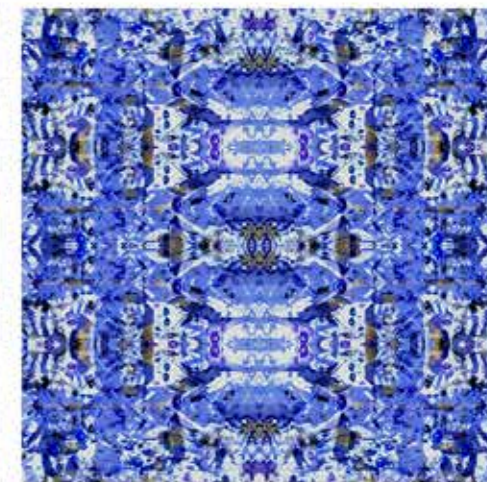
SKU078



SKU088



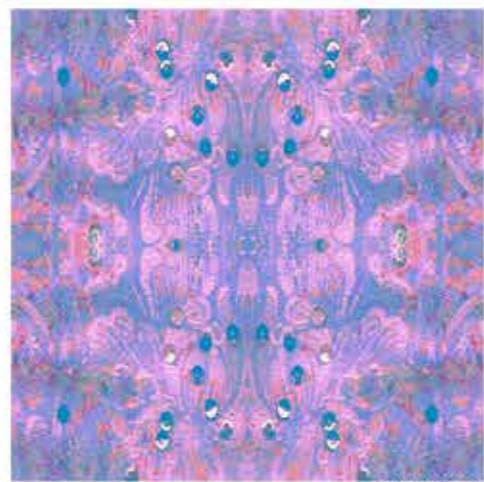
SKU089



SKU090



SKU079



SKU080



SKU081



SKU091



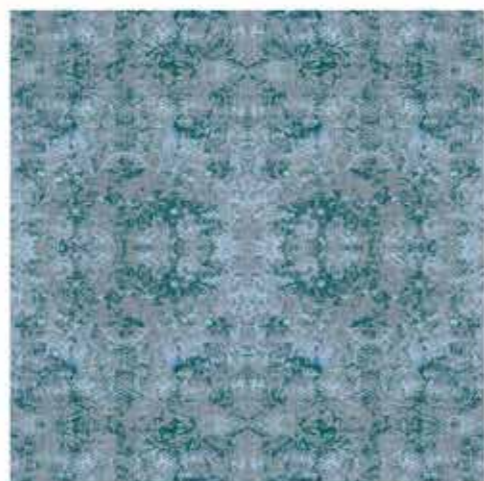
SKU092



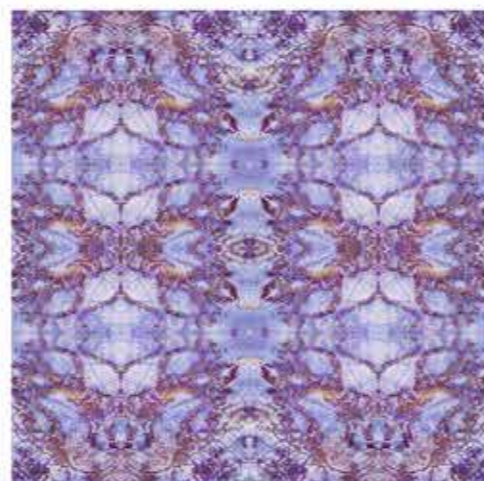
SKU093



SKU082



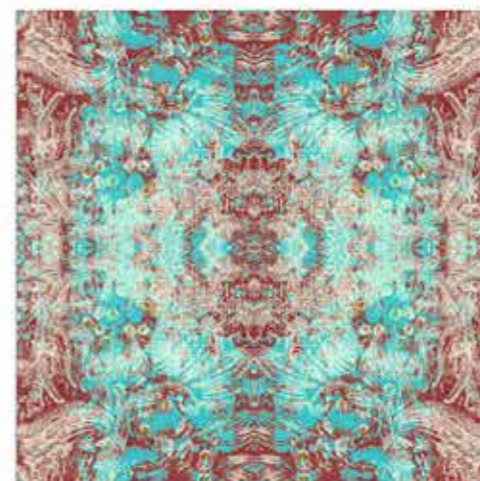
SKU083



SKU084



SKU094



SKU095



SKU096



SKU097



SKU098



SKU099



SKU109



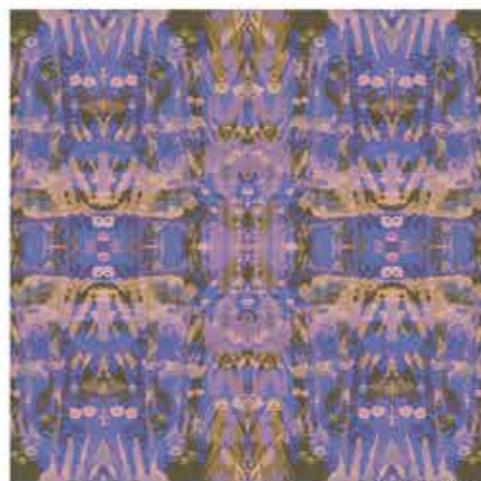
SKU110



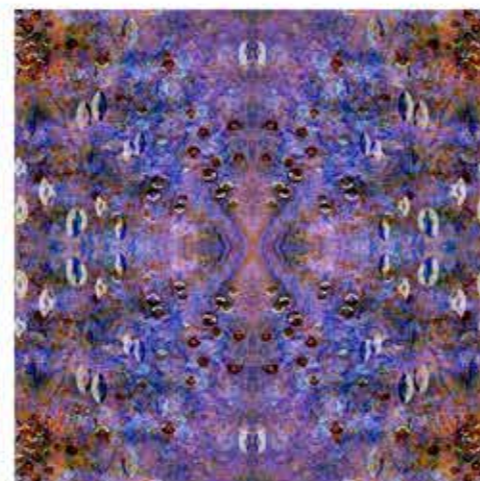
SKU111



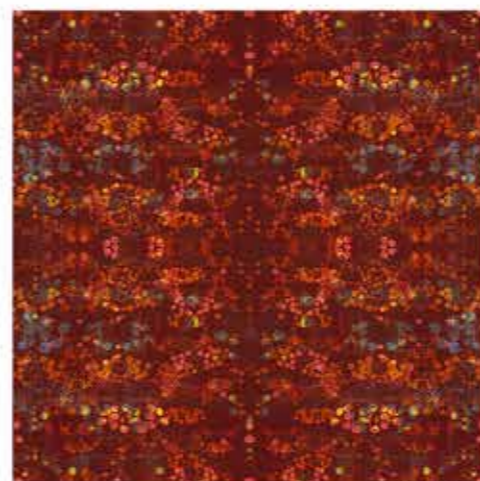
SKU100



SKU101



SKU102



SKU112



SKU113



SKU114



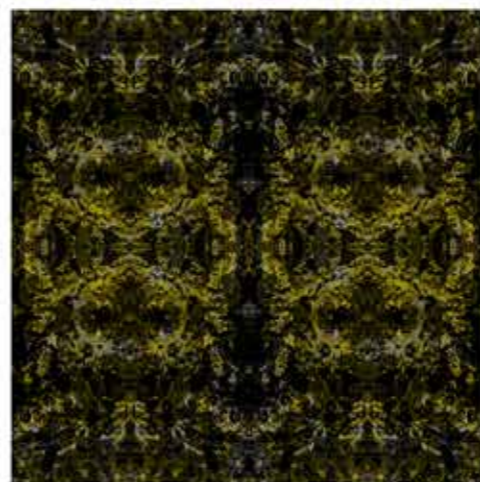
SKU103



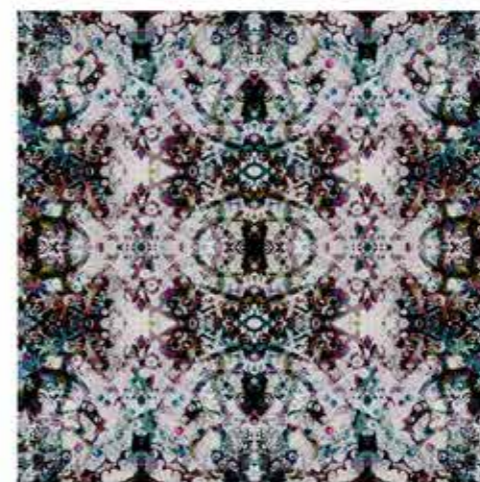
SKU104



SKU105



SKU115



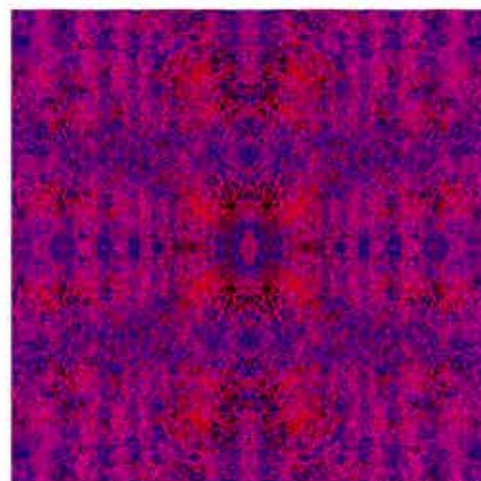
SKU116



SKU117



SKU106



SKU107



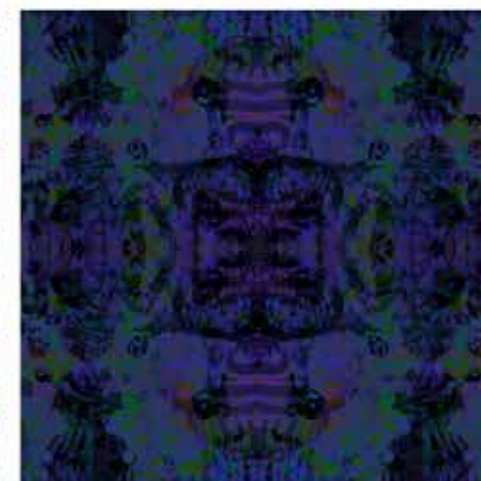
SKU108



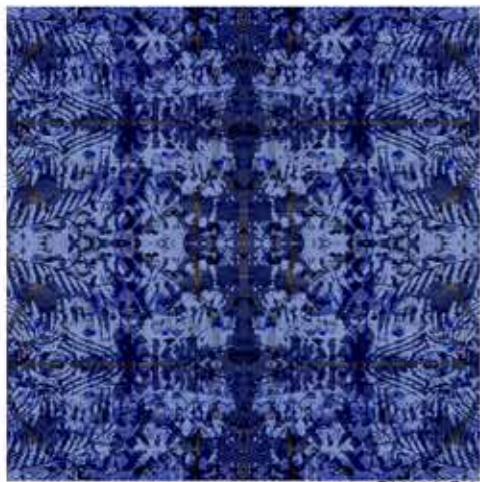
SKU118



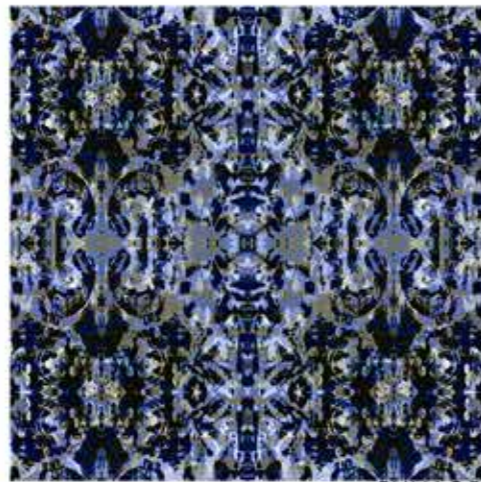
SKU119



SKU120



SKU121



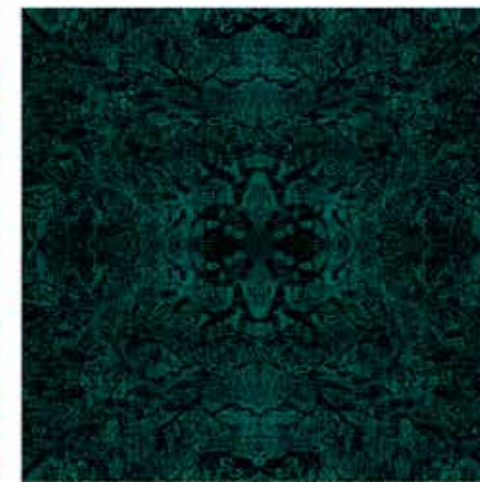
SKU122



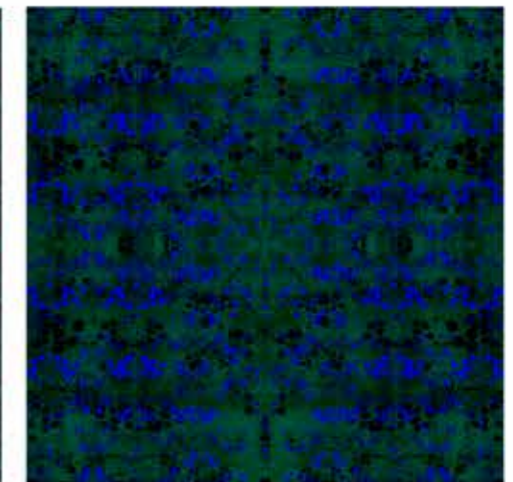
SKU123



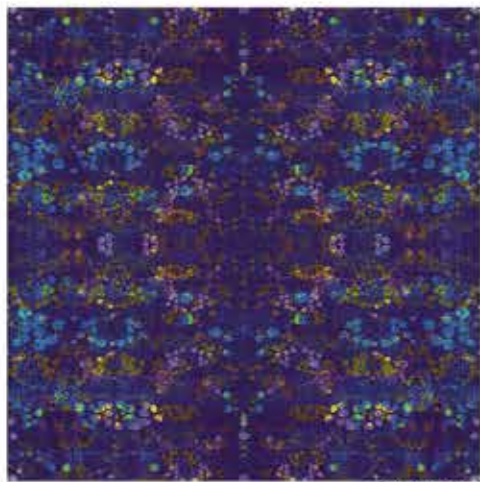
SKU133



SKU134



SKU135



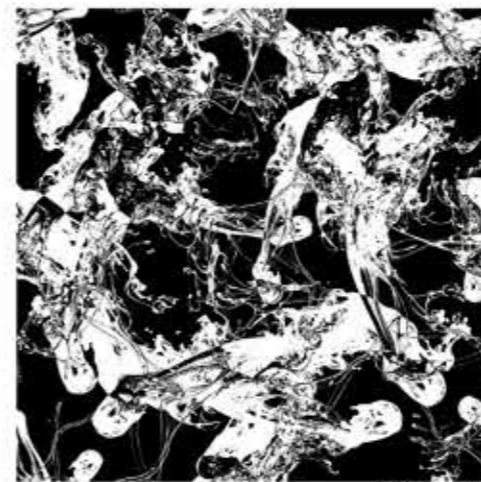
SKU124



SKU125



SKU126



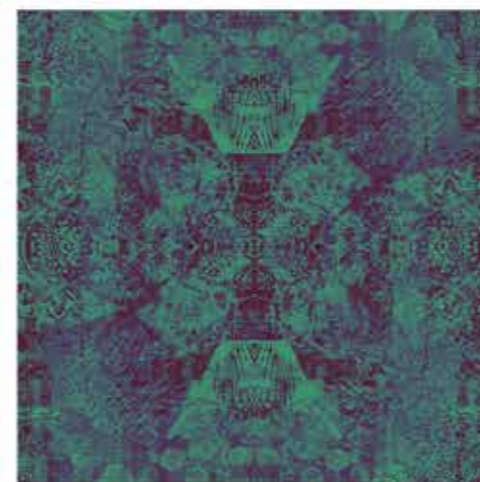
SKU136



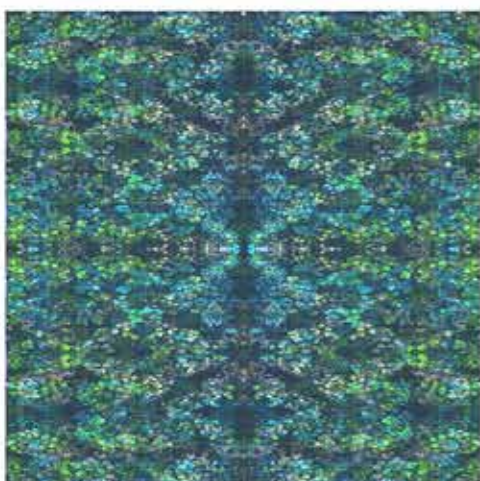
SKU127



SKU128



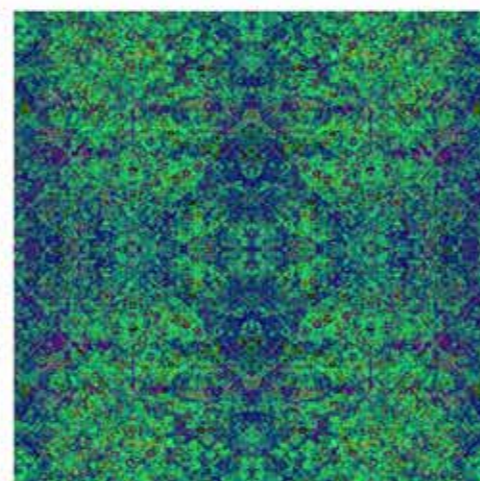
SKU129



SKU130



SKU131



SKU132



1325